



MORELOS DIVERSION DAM CHANNEL CAPACITY RESTORATION PROJECT

November 14, 2006








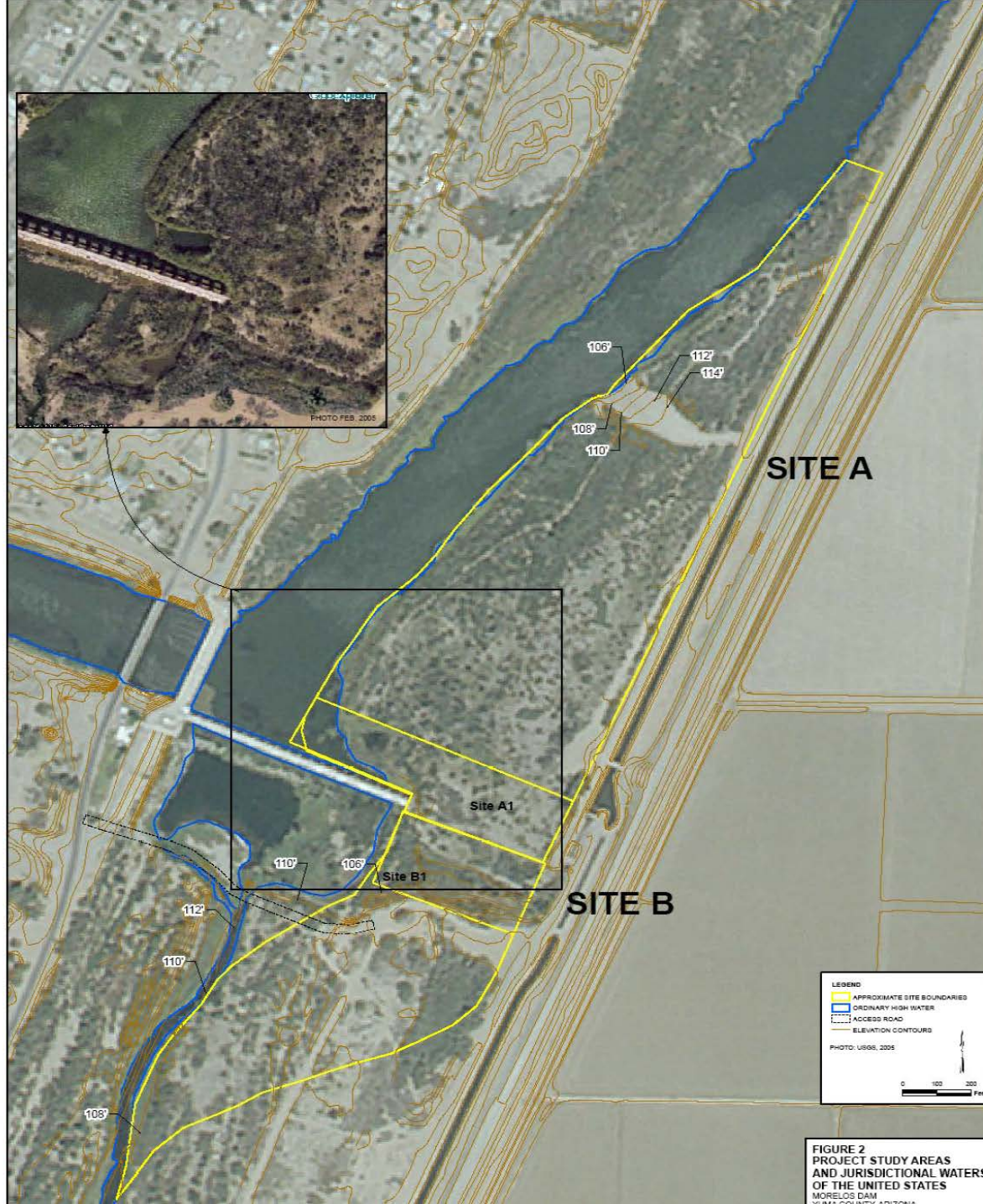






- 
- **Initial Safety of Dam**
 - **Binational Joint Inspection March 6-7, 2001**
 - **Follow-up binational inspection conducted April 5-6, 2006**

- Initial consultation with U.S. Fish and Wildlife Service (USF&WS) August 8, 2001 letter. Involved Lower Colorado River Boundary and Channel Capacity Project.
- Morelos Dam Project letter to USF&WS on September 22, 2005
- Final Biological Opinion letter received from USF&WS on August 23, 2006



- Currently, discussion with US Corp of Engineers for final permitting process
- Description of Proposed Action:
 - The proposed action is located on the Colorado River immediately upstream and downstream of the existing Morelos Diversion Dam at river mile 22.1. The project area is in Yuma County, Arizona; however, some activities involving disposal of dredge spoil will occur on the Mexican side of the Colorado River in Baja California North.

- The proposed action involves the clearing of 38.4 acres of brush and trees in two areas (Site A above the Dam and Site B below the dam) and excavation of 3.4 feet of sediment from Site A and 2.4 feet of sediment from Site B to drop the surface elevation of the sites to 107.6 feet mean sea level.

- The third phase of the project would remove additional sediment overlying existing bank protection to areas at the eastern side of the dam along the length of the spillway. All vegetation in these areas would be removed. Sediment would be removed to 103.0 feet mean sea level in the five-acre area shown in the BA as sites A1 and B1.
- The proposed action area extends from the upper end of the project area at approx. river mile 23 to river mile 21.

TO VIEW PREVIOUS MINUTES FOR
THE COLORADO RIVER CITIZENS FORUM
GO TO:

www.ibwc.state.gov/Citizens_Forums/CF_Colorado.html

or email

annamorales@ibwc.state.gov