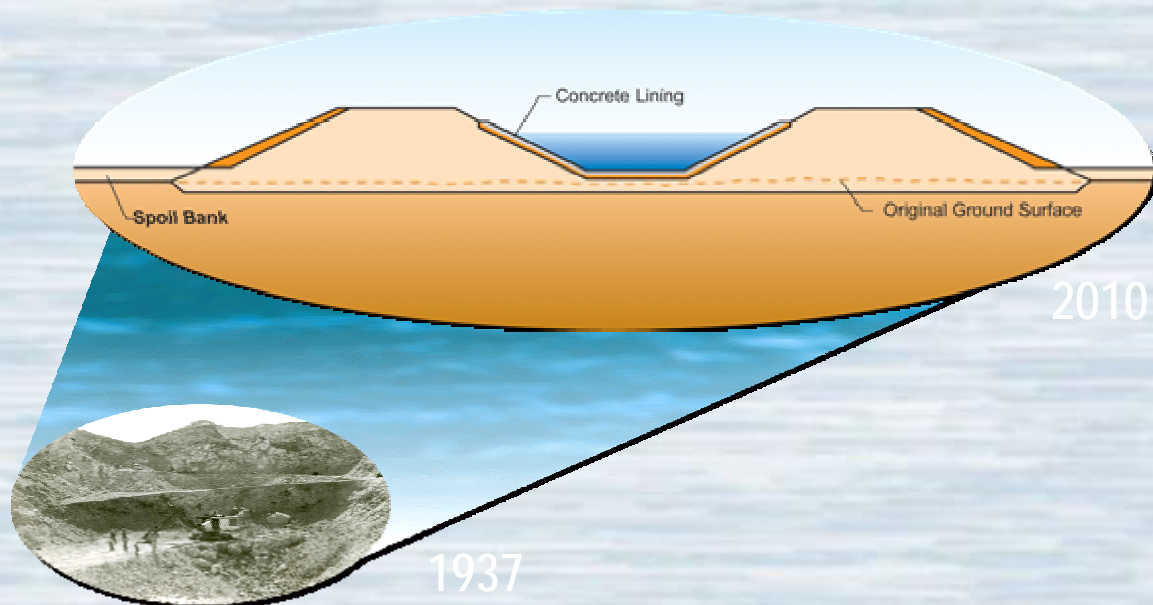




## Imperial Irrigation District

In cooperation with:  
Parsons Water & Infrastructure Inc.  
Bookman-Edmonston  
U.S. Bureau of Reclamation  
Dr. Paul Krausman  
EcoSystem Restoration Associates  
ASM Affiliates



## Colorado River Citizens Forum IVC Presentation

*for the*  
**All American Canal Project**



**San Diego County  
Water Authority**

# Colorado River Basin



# **Canal Lining Project**

- **Component of Colorado River Quantification Settlement Agreement**
- **In conjunction with lining of a portion of the Coachella Canal settles a water rights dispute and litigation dating to the 1960s**
- **Provides 67,700 ac-ft/yr of water**
- **SDCWA will receive 56,200 ac-ft annually**
- **SLR will receive 11,500 ac-ft annually**



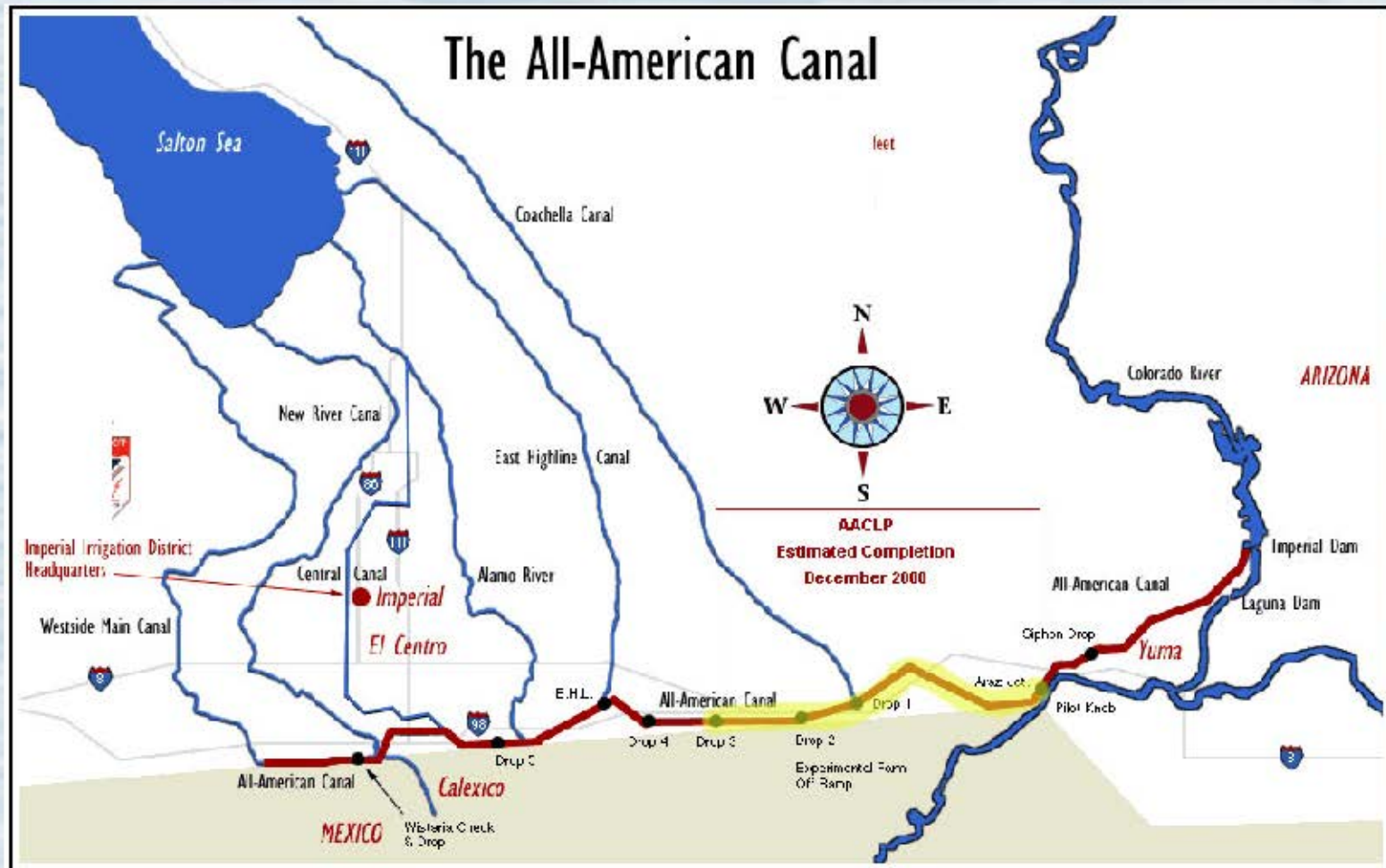
# History of the All American Canal Lining Project

- Congressional authorization of the Project was under PL 100-675, Title II signed into law by the President on November 17, 1988
- Concrete lining will begin just downstream of Pilot Knob (~Station 1170+27) to Drop 4, a total of about 29 miles
- During preparation of the EIS/EIR the Project was modified to begin at Station 1250+00 and end at Drop 3 (23 miles) due to:
  - Major environmental issues between Drops 3 & 4 and costs to mitigate such
  - Desire to locate the starting point further away from Pilot Knob, (a sacred area of the Quechan Indians) to eliminate any potential environmental/cultural conflicts
- Approved the Record of Decision (ROD) on July 29, 1994

# History of the All American Canal Lining Project

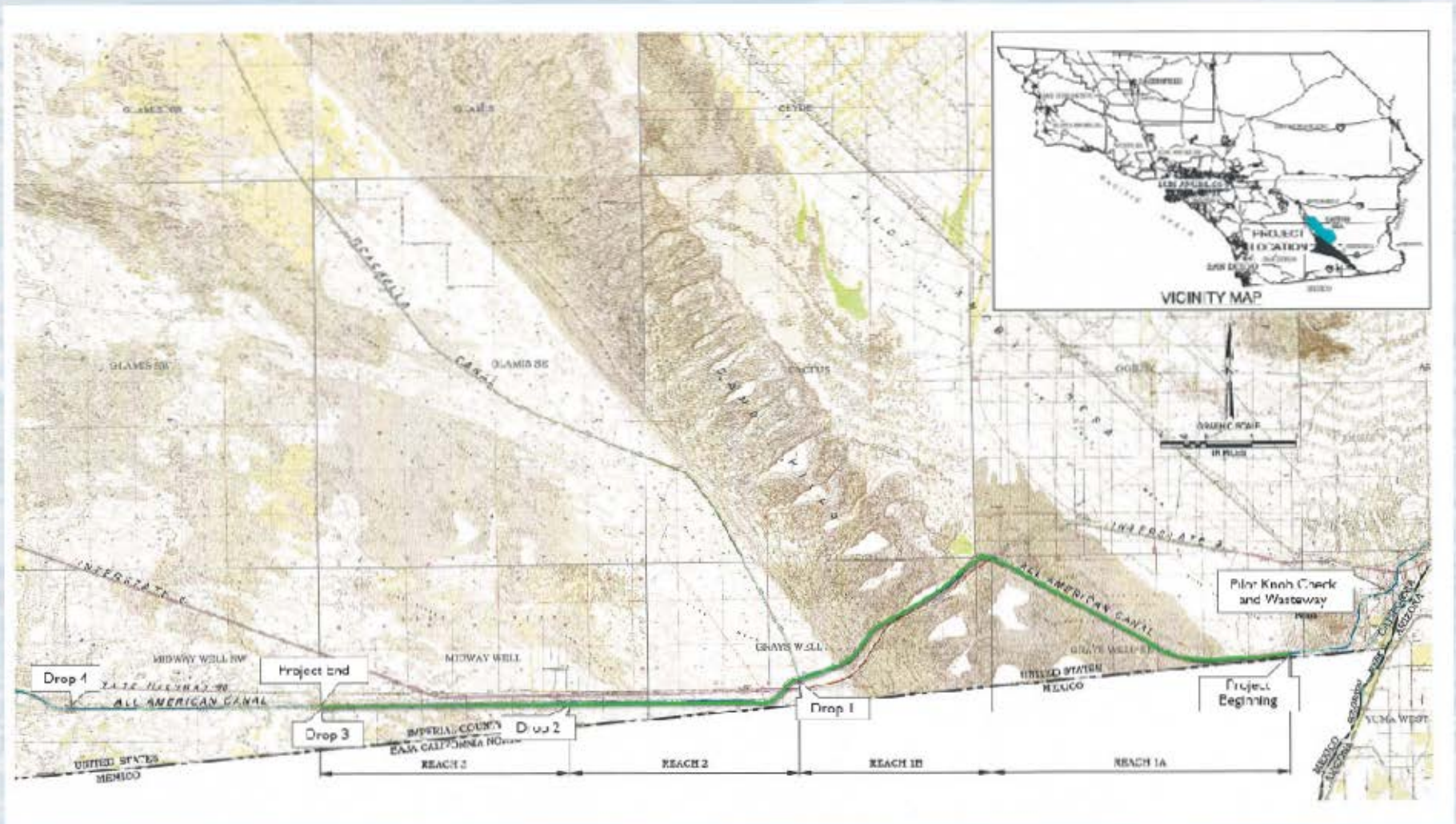
- Completed and filed EIS/EIR in July 1994
- Reclamation undertook a Re-examination and Analysis of 1994 FEIS/EIR and ROD which determined said documents remained current with the proposed action
- California State Legislature passes SB 1765 continuously appropriating \$200 million with \$126 million set aside for this Project. This bill was signed into law by the Governor on September 24, 1998
- California voters in 2003 approve Proposition 50; adds \$9.65 million to Project for total of \$135.65 million
- California State Legislature (Proposition 84) approved an additional \$17.4 million for the project in November of 2006
- Quantification Settlement Agreement (QSA) and its related documents signed on October 10, 2003 with the Project a key component to reduce California's water use to its 4.4 million acre-feet apportionment

# AACLP Project Location





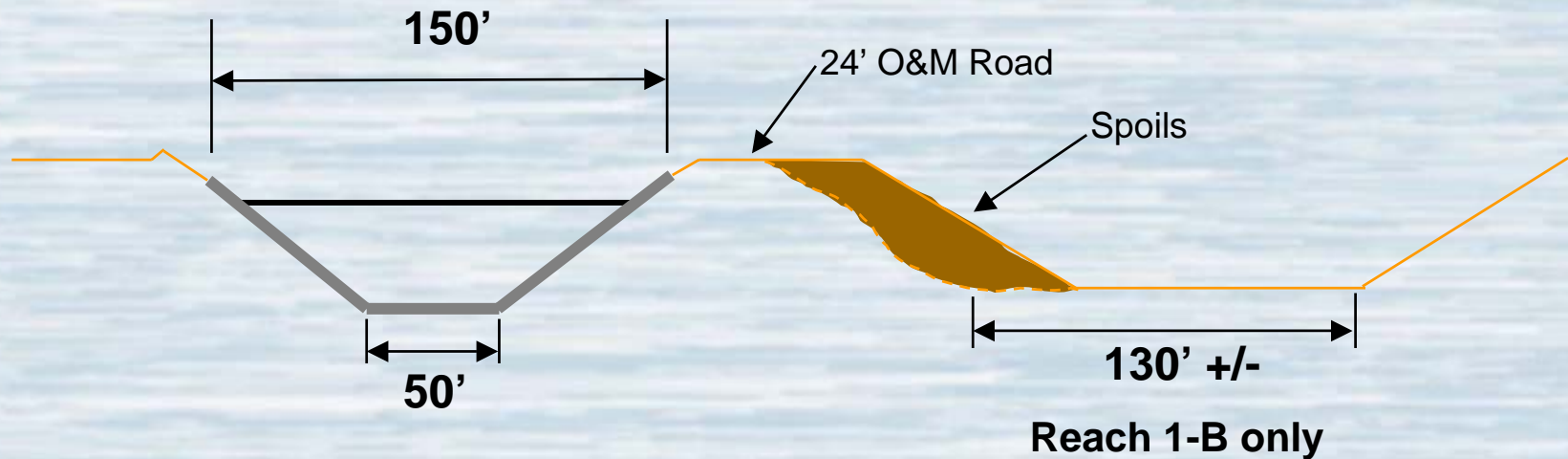
# AACLP Alignment



# All-American Canal Typical Section

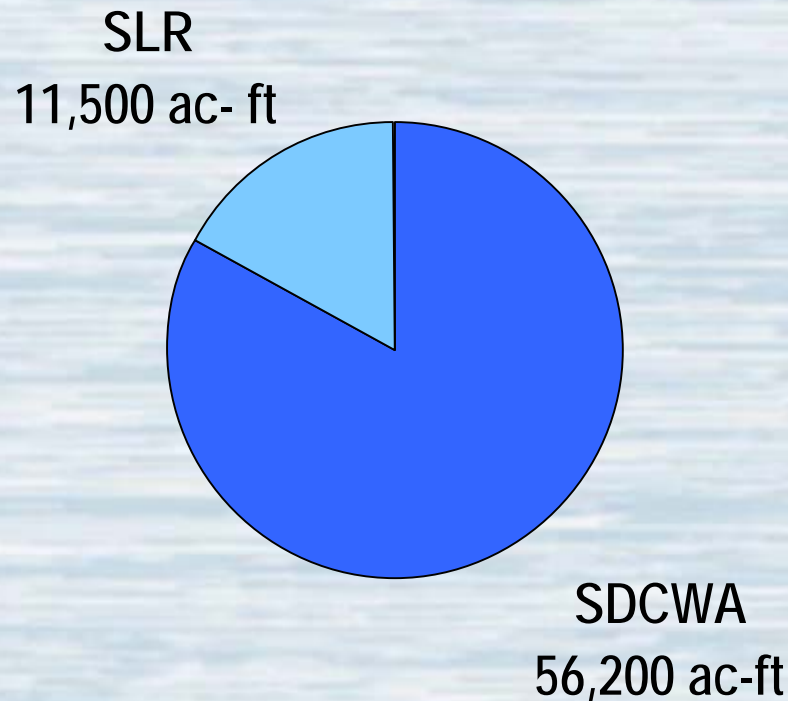
**Proposed Lined Section**  
**1.75H:1V side slope Reaches 1 & 2**  
**2H:1V side slope Reach 3**

**Existing Unlined Section**  
**2H:1V side slope**





# 67,700 Acre-Feet per Year of Water Conserved from Lining the All-American Canal



## How does completing 78% of the project result in recovering 97% of the seepage water?

- The seepage recovery by reach is as follows:

Reach	ac-ft	Cumulative ac-ft
1	50,850	50,850
2	14,700	65,550
3	2,150	67,700



# Project Challenges

**Project team worked diligently on a fast-track basis to address a number of design, construction, scheduling, and cost issues to minimize costs (construction, environmental, and operations/maintenance) yet optimize the new canal facilities and address the required environmental mitigation.**

# Design Challenges

- **New parallel alignment to minimize canal excavation, rights-of-way, and dewatering**
- **Reach 1B is most difficult—a number of alternatives were considered. The embankment in-canal alignment was selected**
- **Project has and will continue to be impacted by increases in fuel, cement, and to a smaller extent steel prices**
- **Working together to ensure that all state funds required based on current schedule are available**



# Current Status

- **Design is complete but lawsuits are currently preventing construction for beginning**
- **Lawsuit resulted in a District Court decision in favor of the project. Plaintiff appeal with 9<sup>th</sup> Circuit resulted in an injunction on August 25<sup>th</sup> 2006**
- **Project is currently in the hands of the 9<sup>th</sup> Circuit with some type of court action occurring tomorrow**
- **Current schedule indicates construction will begin in June of 2007 and be completed in the Spring of 2010**

# Current Status

- **Have negotiated with Ames/Coffman to maintain their contract in anticipation of a court decision in favor of moving forward with the project**
- **Currently in negotiations with Kiewit Pacific**
- **Current schedule indicates construction will begin in June of 2007 and be completed in the Spring of 2010**

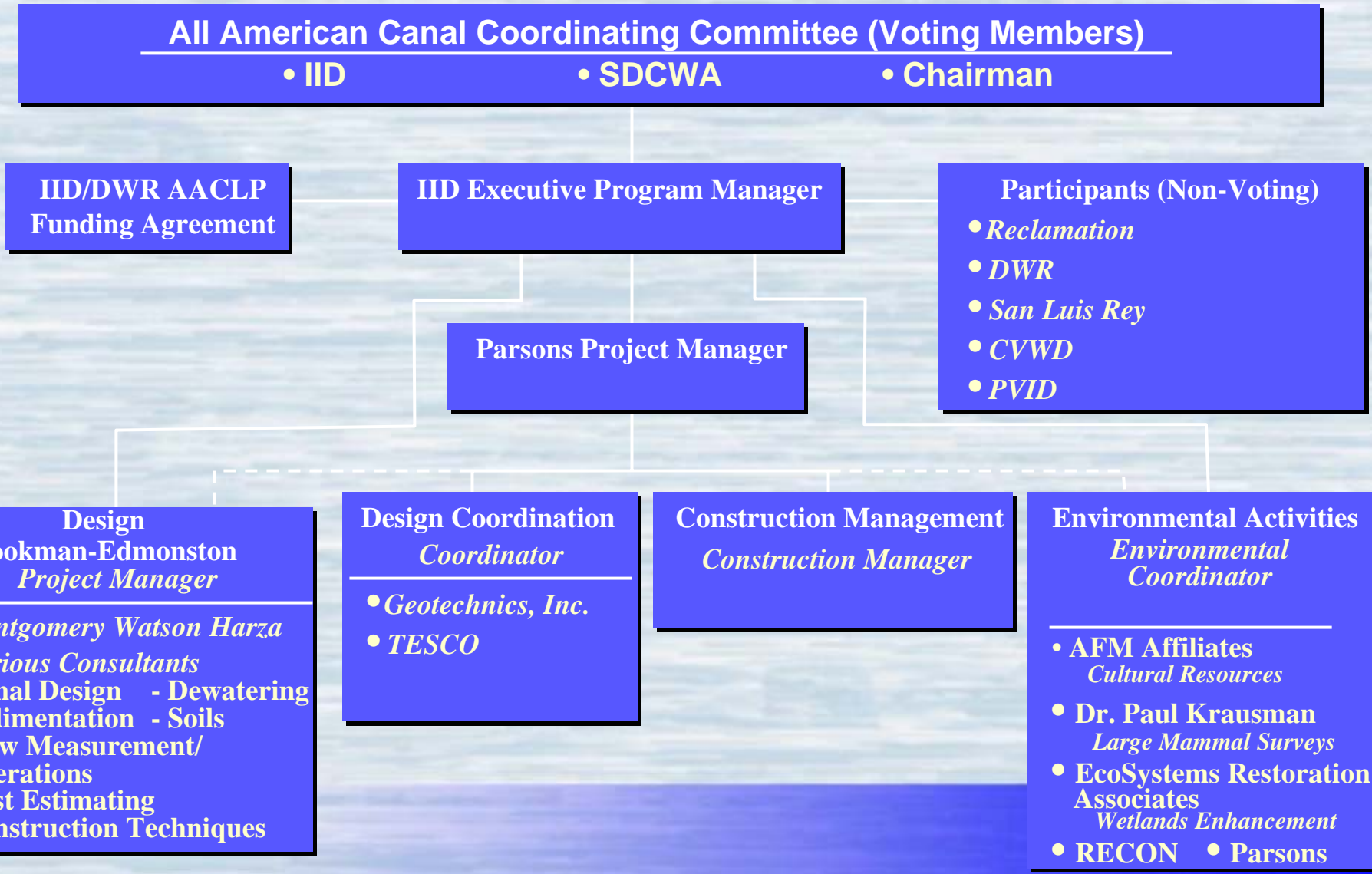


# Canal Photos





# AACLP Project Organization





# **AACLP OM&R Coordinating Committee**

## **Voting Members**

**SDCWA**

**IID**

**CVWD**

**SLR**

**Member Jointly Appointed**

## **Non-Voting Member**

**USBR**

**IID prepares O&M plan for All-American Canal**

**Thank You  
Questions?**