



# All-American Canal Lining Project

**Presentation To:  
USIBWC**

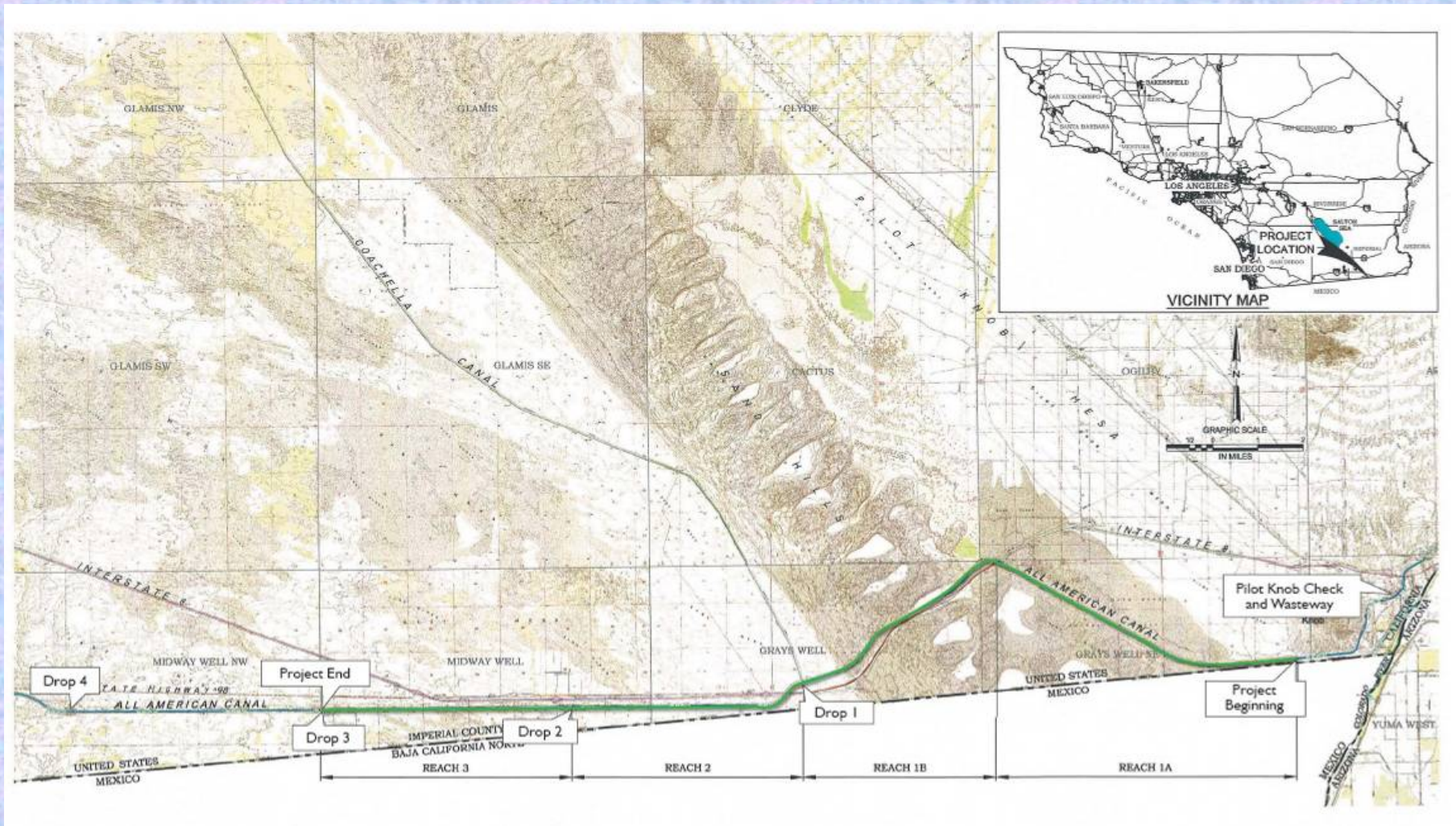
**By**

***Todd Shields, Executive PM, AACLP***



**December 2007**

# AACLP Project Location





# AACLP – FACT SHEET

- Constructed in the 1930s by Reclamation
- New Canal will conserve (seepage control by lining 23 miles of canal) 67,700 acre feet per year. Enough water for 500,000 people.
- Approximate lined canal construction cost is \$250M.
- Project being directed by the All-American Canal Coordinating Committee (IID/San Diego County Water Authority/Reclamation)

# History of the All-American Canal Lining Project

- Congressional authorization of the Project in 1988
- Approved Environmental Compliance in 1994
- Project funding has two sources: State of California and San Diego County Water Authority
- Construction Started June, 2006 then stopped by court ordered injunction
- Court injunction lifted in early-2007, NTP issued to both contractors by early June, 2007. Cost of Injunction: \$30 million.

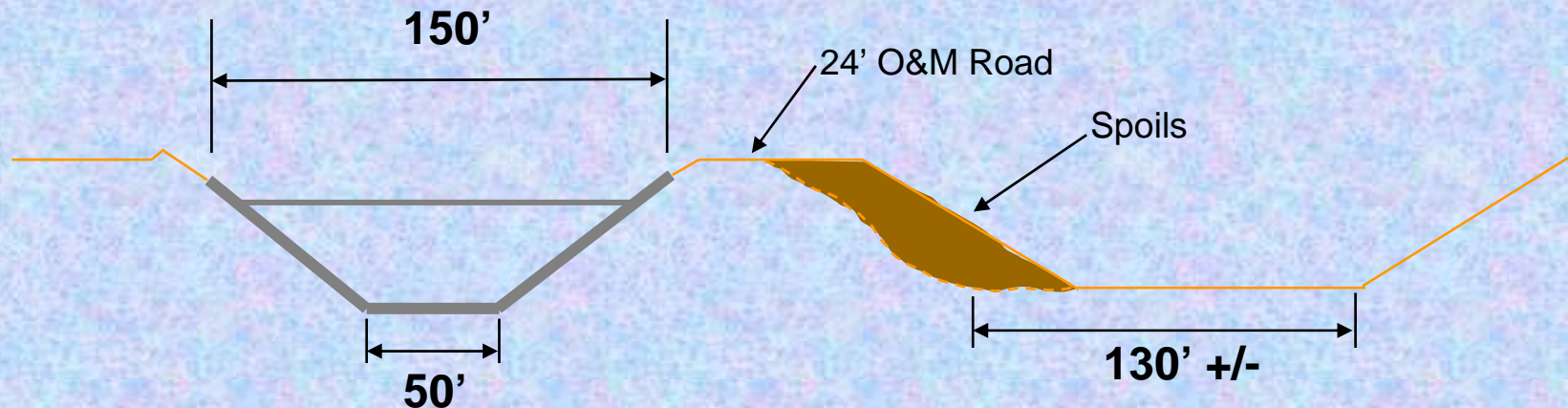
# AACLP Project Elements

- Construct approximately 23 miles of lined canal adjacent to existing canal
- Construction started June 2007
- Construction projected to be complete by Spring 2010
- Reach 2 expected to be complete by early 2008

# All-American Canal Typical Section

**Proposed Lined Section**  
**1.75H:1V side slope Reaches 1 & 2**  
**2H:1V side slope Reach 3**

**Existing Unlined Section**  
**2H:1V side slope**





# AACLP Project Organization

## All-American Canal Coordinating Committee (Voting Members)

- IID – Michael King
- SDCWA – Kenneth Steele
- Chairman – Van Tenney

**IID/DWR AACLP  
Funding Agreement**

**IID Executive Program Manager**  
*Todd Shields*

**Participants (Non-Voting)**

- *Reclamation – John English*
- *DWR – Chuck Keene*
- *San Luis Rey*
- *CVWD*
- *PVID*

**Parsons Project Manager**  
*Uli Kappus*

**Design**  
**Bookman-Edmonston**  
**Project Manager – Wayne Dahl**

- *Montgomery Watson Harza*
- *Various Consultants*
- Canal Design
- Dewatering
- Sedimentation
- Soils
- Flow Measurement/  
Operations
- Cost Estimating
- Construction Techniques

**Design Coordination**  
**Coordinator –**  
**Walt Long**

- *Geotechnics, Inc.*
- *Hale Engineering*

**Construction Management**  
**Construction Manager –**  
**Don Crumbley**

**Environmental Activities**  
**Environmental**  
**Coordinator –**  
**Michel Remington, IID**

- **AFM Affiliates**  
*Cultural Resources*
- **Dr. Paul Krausman**  
*Large Mammal Surveys*
- **EcoSystems Restoration**  
**Associates**  
*Wetlands Enhancement*
- **RECON**
- **Parsons**

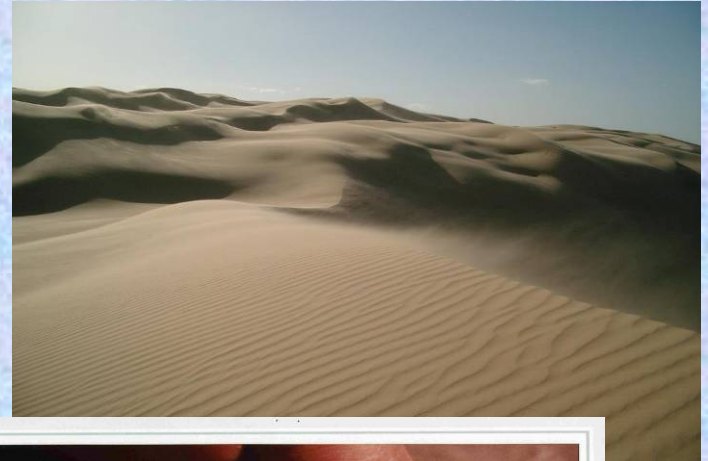
# Project Challenges

- Minimizing Project Impact due to Design, and Schedule Changes
- Environmental Constraints
- Maintaining Public Access through Active Construction Site
- Security along International Border
- Continuous water delivery



# Environmental Program Objectives

- Compliance with Multiple Requirements:
- Air Quality
- Cultural Resources
- Endangered Species
- Hazardous Materials/Solid Waste
- Recreation / Transportation
- Water Quality/Stormwater
- Wetlands
- Wildlife



# Challenge of Public Access and Recreation During Construction

- Coordinating Construction and Public Use Near Work Areas
- Interagency Coordination During Peak Use Periods
- Public Information Distribution is Essential
- Interagency Recreation and Transportation Management Plan



**Final Draft**

Recreation and Transportation Management Plan  
for the  
All American Canal Lining Project



Prepared by  
The All American Canal Lining Project Work Group  
Project Planning Committee



August 8, 2007

DRAFT - CLIENT-PRIVILEGED DOCUMENT - NOT FOR DISTRIBUTION  
10\_AACLIP\_Draft\_RTMP\_080807.doc  
8/8/07



# Safety Program





# Current Status



- Over 12 Million CY of Earth Moved to Date
- First major concrete pour completed on August 8, 2007
- 5 miles of Production Lining of New Canal completed to date.

# Original Construction





# Completed Canal





# Construction Photos





# Construction Photos





# Construction Photos









# Construction Photos





# Construction Photos





# Construction Photos





# Construction Photos



Thank You  
Questions?