

INTERNATIONAL BOUNDARY AND WATER COMMISSION UNITED STATES AND MEXICO



Upper Rio Grande Flood Control Project

Levee Improvement

MARCH 23, 2010

Rio Grande Canalization Project

- Constructed 1938-1943
- Water delivery and flood control project
- 106 river miles from Percha Dam, NM to American Dam at El Paso, TX
- 130 miles of flood control levees



American Recovery and Reinvestment Act of 2009



- \$220 million appropriated to USBIWC
- Funds for rehabilitating Rio Grande flood control levees in Texas and New Mexico
- Purpose of Recovery Act is to create and save jobs, promote economic recovery, and invest in infrastructure for long-term economic benefit.

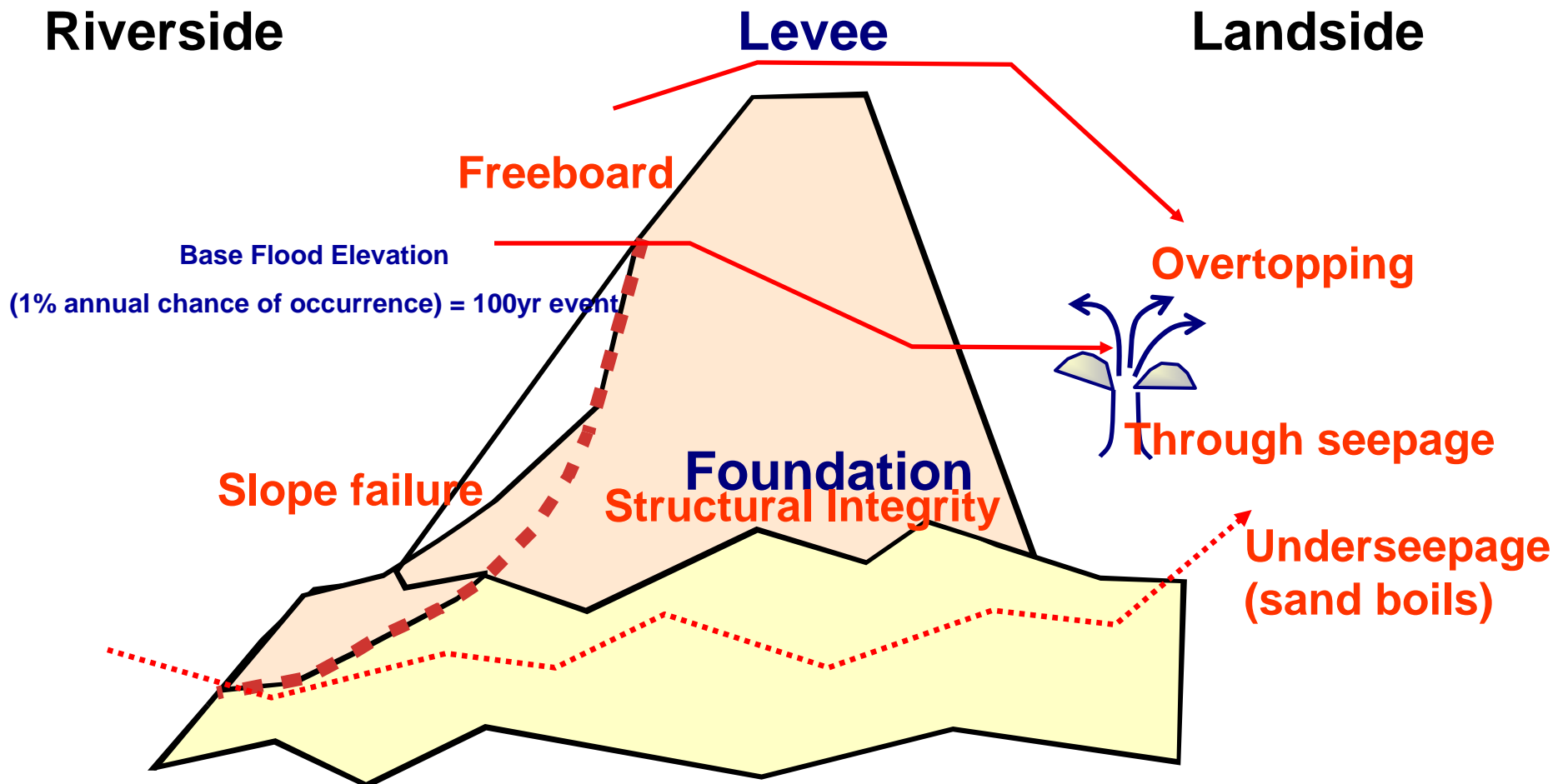


Why Perform Levee Improvements?

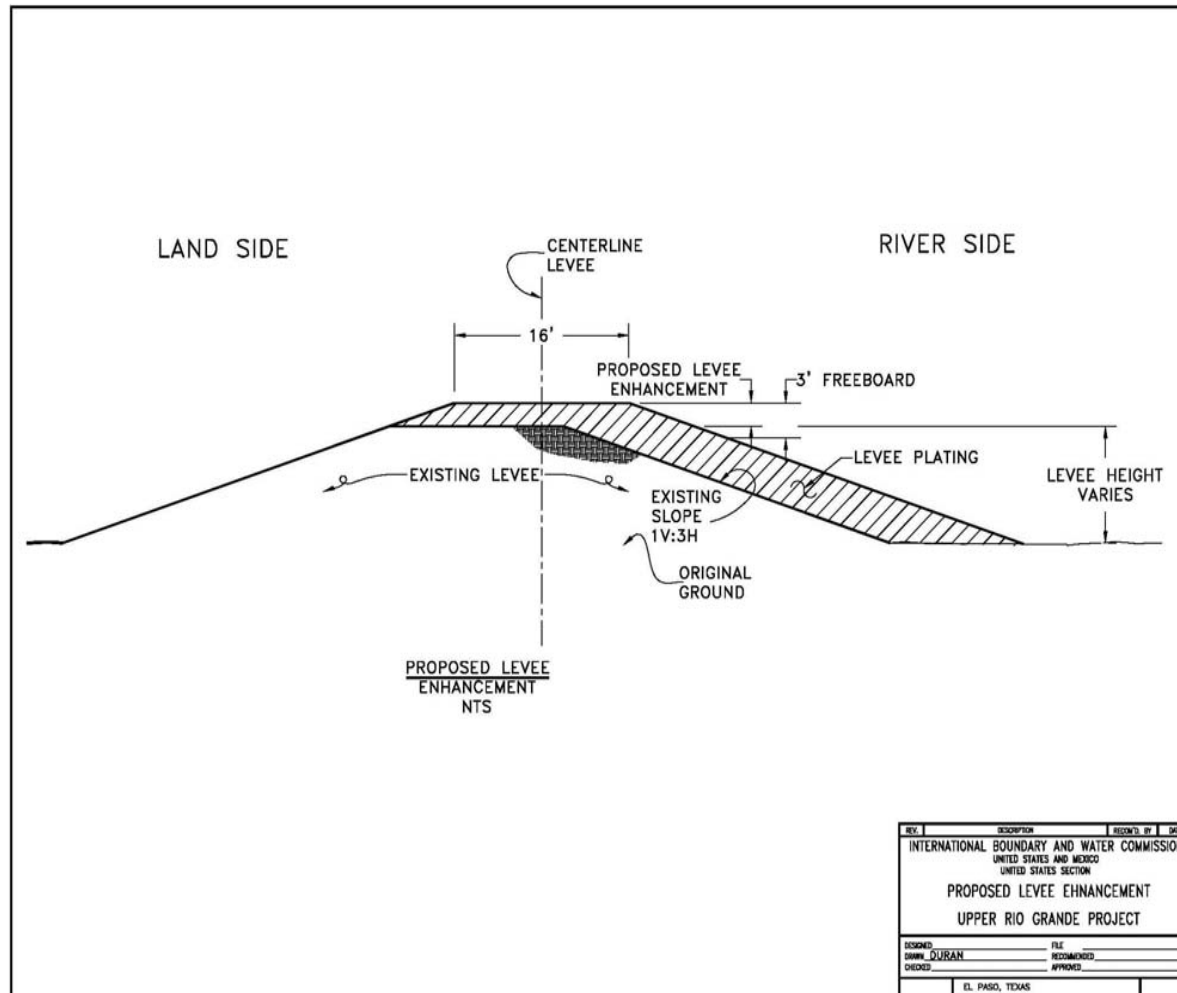
- FEMA is updating flood insurance rate maps
- FEMA requires levees to contain the 100-year flood with 3 ft. freeboard
- USIBWC notified FEMA in 2006 that it could not certify all levees as meeting this requirement



Levee Terminology



Levee Enhancement Typical Section

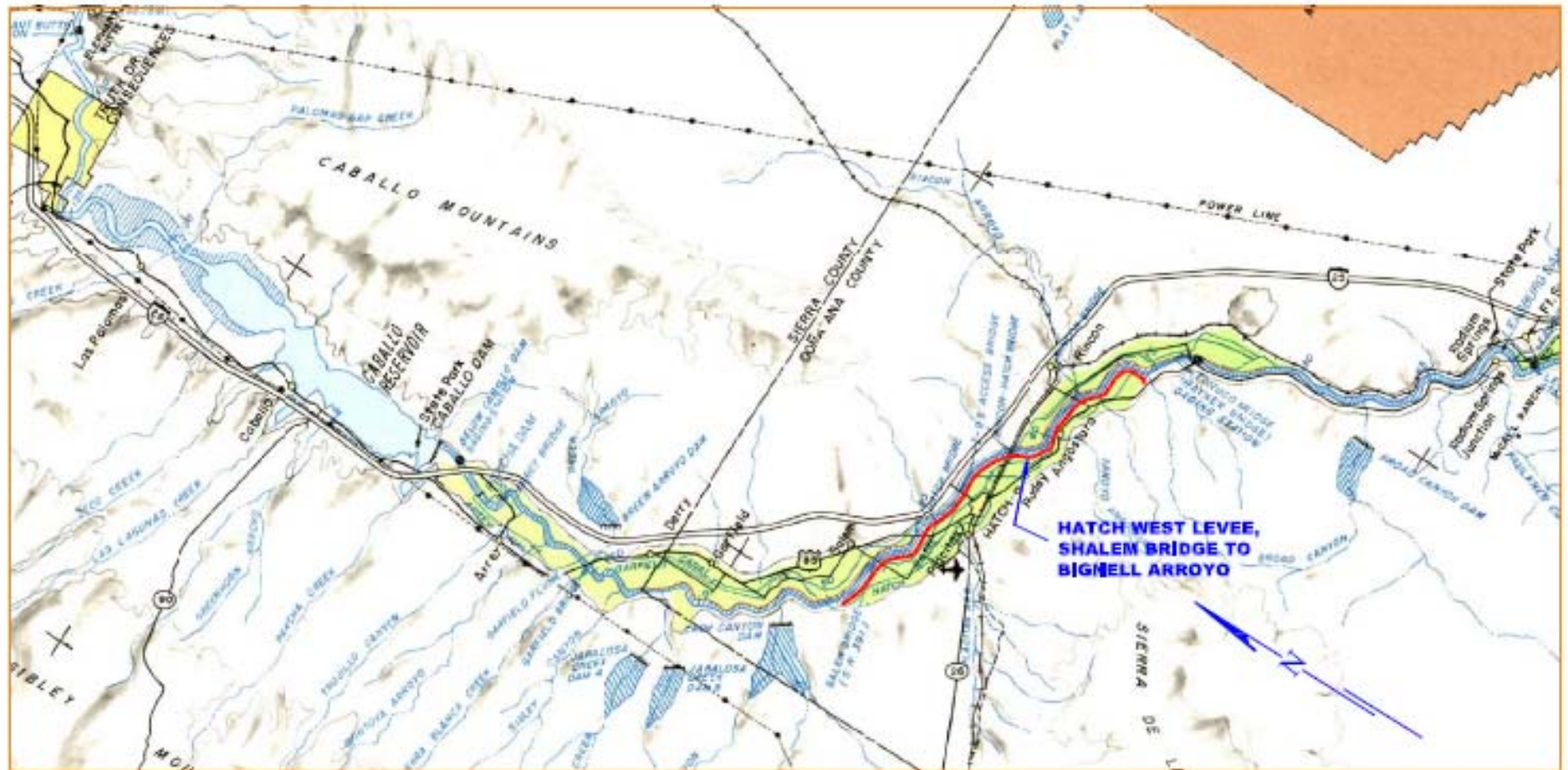


Levee Status – Doña Ana County

■ Hatch Area Levees

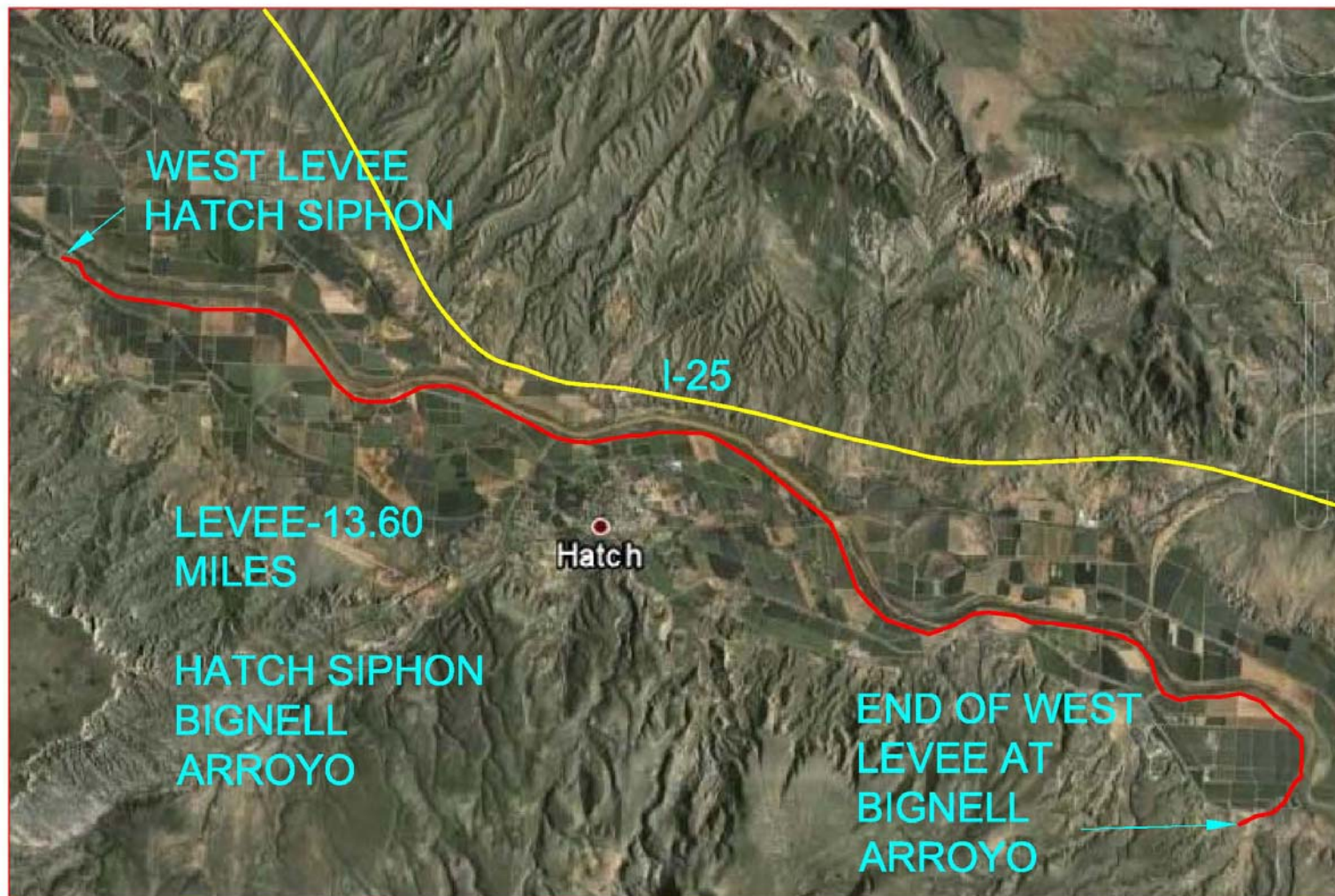
- West Levee
- Hatch Siphon to Bignell Arroyo, Levee Enhancement, Structure Improvements
 - Award Construction Contract December 2009
 - Construct Flood Control Improvements April 2010- Feb. 2011



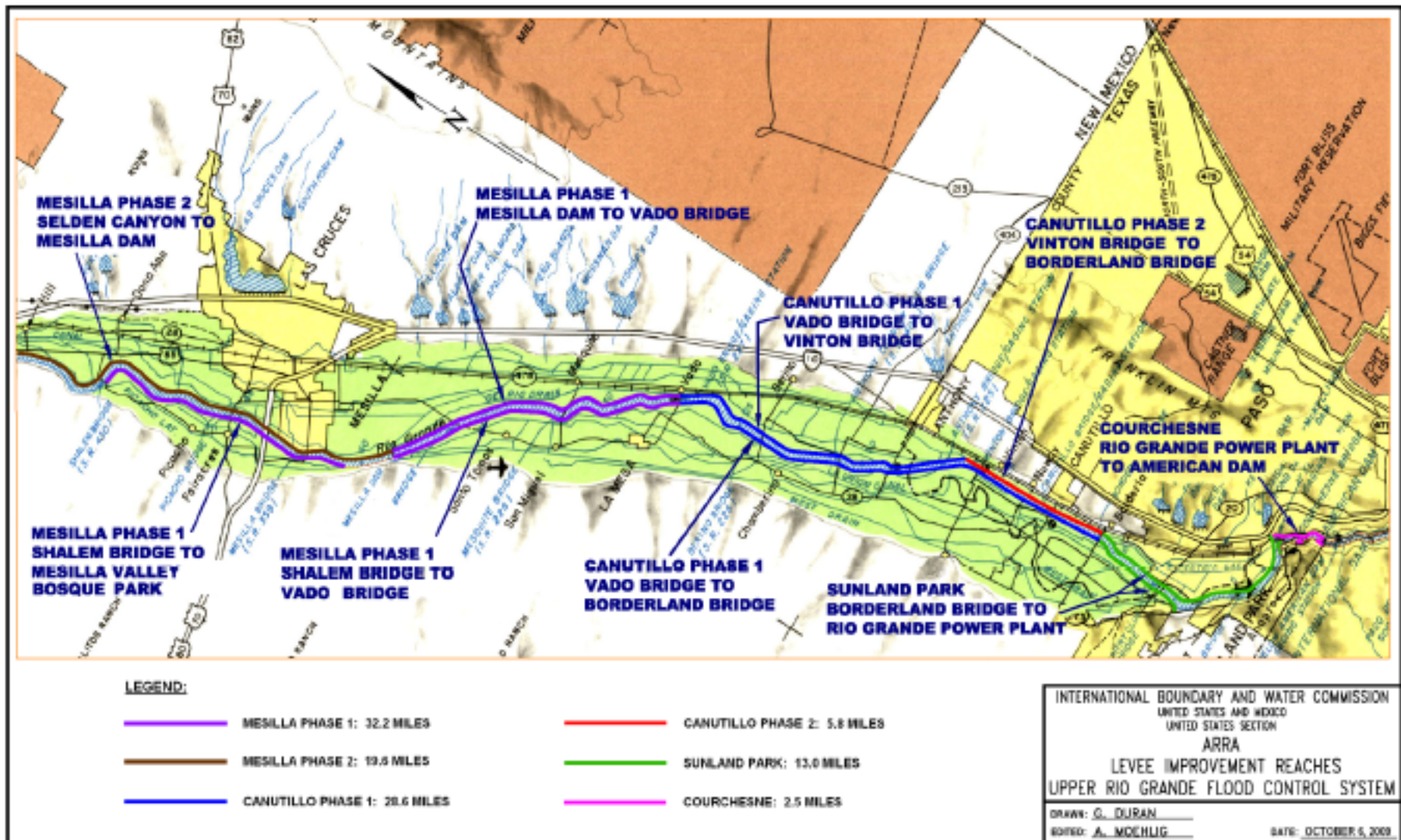


HATCH WEST LEVEE,
SHALEM BRIDGE TO
BIGNELL ARROYO:
13.6 MILES

WEST LEVEE HATCH SIPHON TO BIGNELL ARROYO



Levee Status – Doña Ana County



Levee Status – Doña Ana County

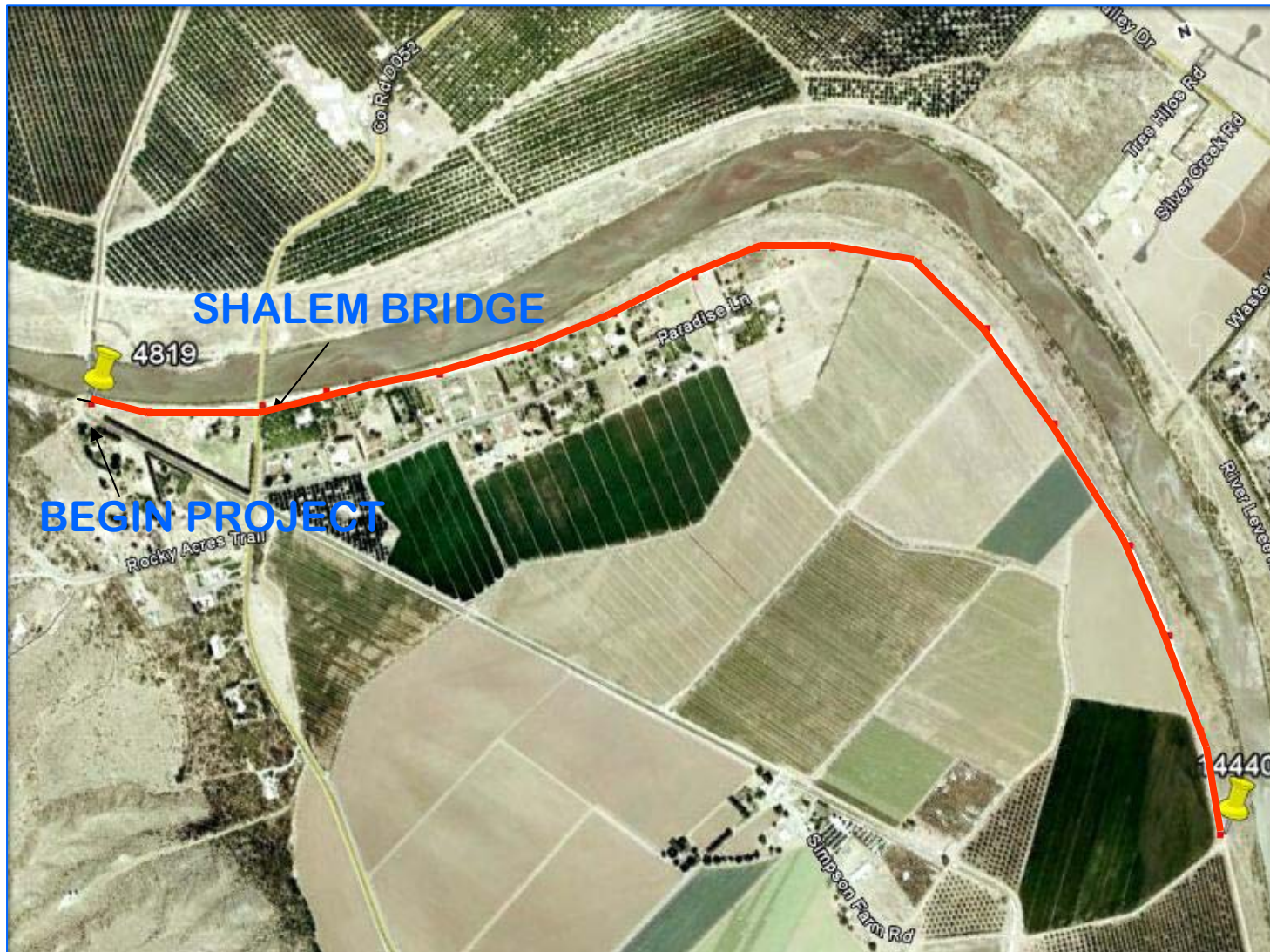
■ Mesilla West Phase 1

- West Levee
- Shalem Bridge to Vado Bridge, Enhancement, Structure Improvements
 - Award Construction Contract December 2009
 - Construct Improvements March 2010- Oct. 2010



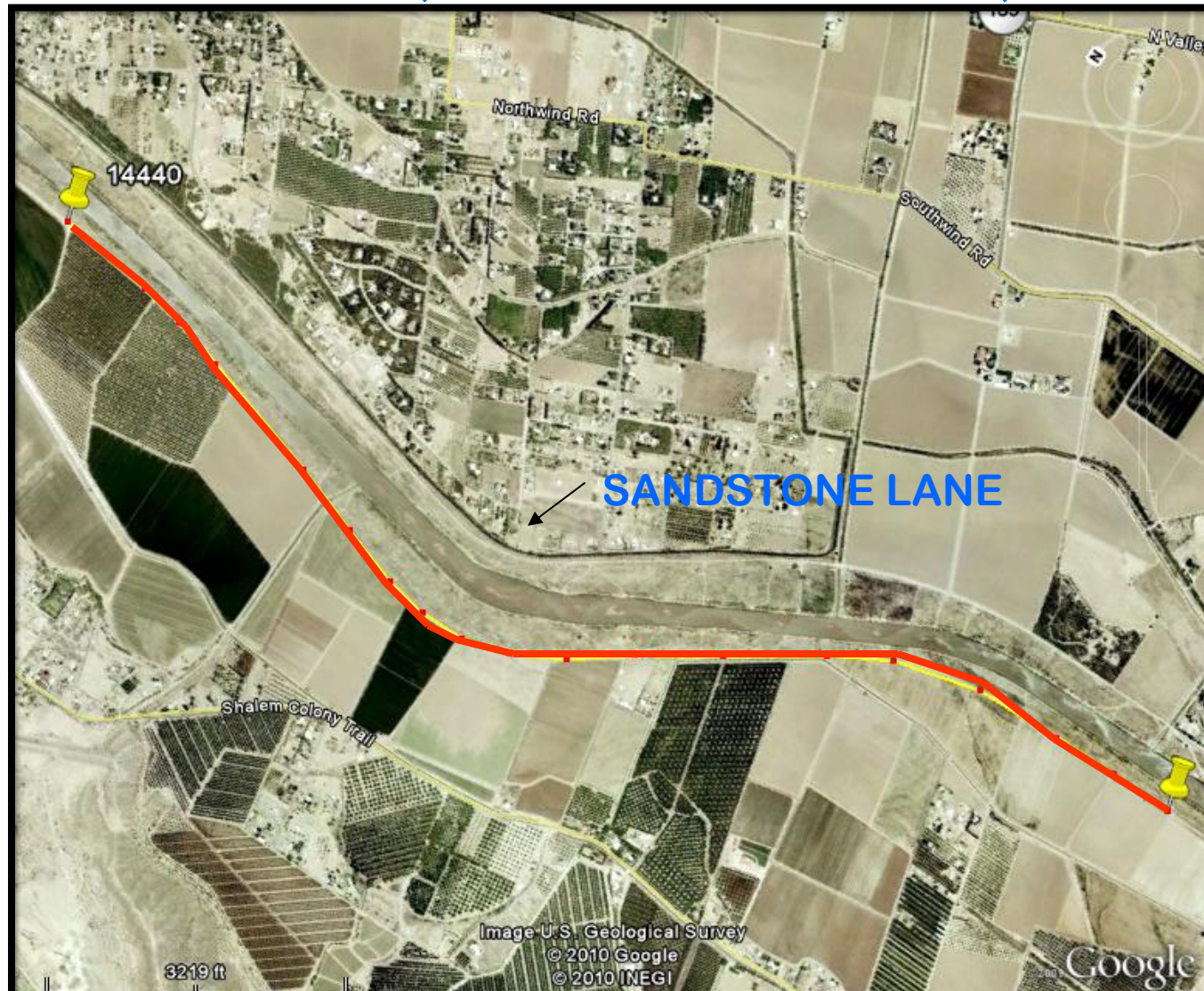
MESILLA WEST PHASE 1

MAR. 10, 2010 TO MAY 29, 2010



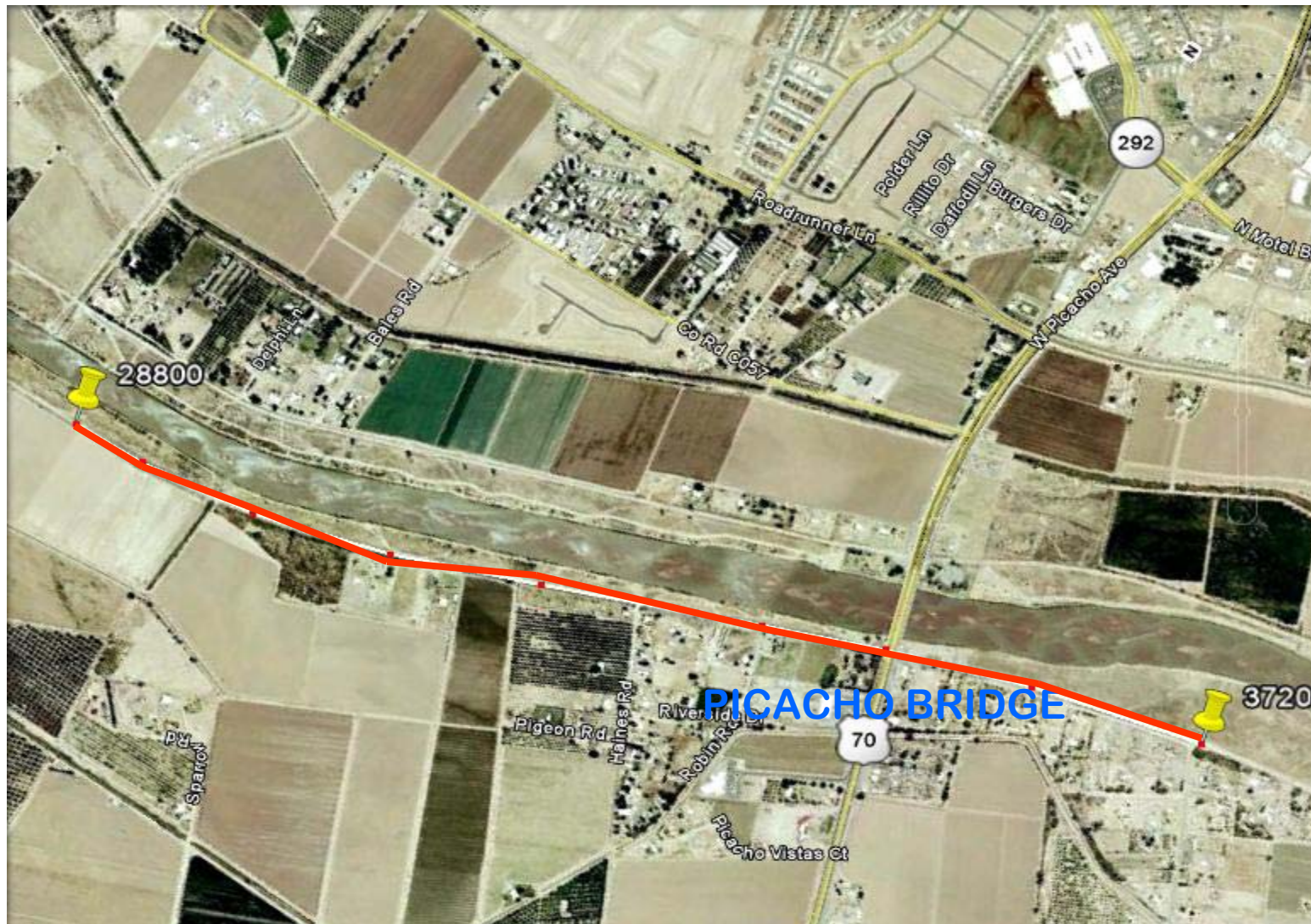
MESILLA WEST PHASE 1

MAR. 20, 2010 TO JUNE 22, 2010



MESILLA WEST PHASE 1

APRIL 14, 2010 TO JULY 18, 2010



MESILLA WEST PHASE 1

MAY 6, 2010 TO AUGUST 15, 2010



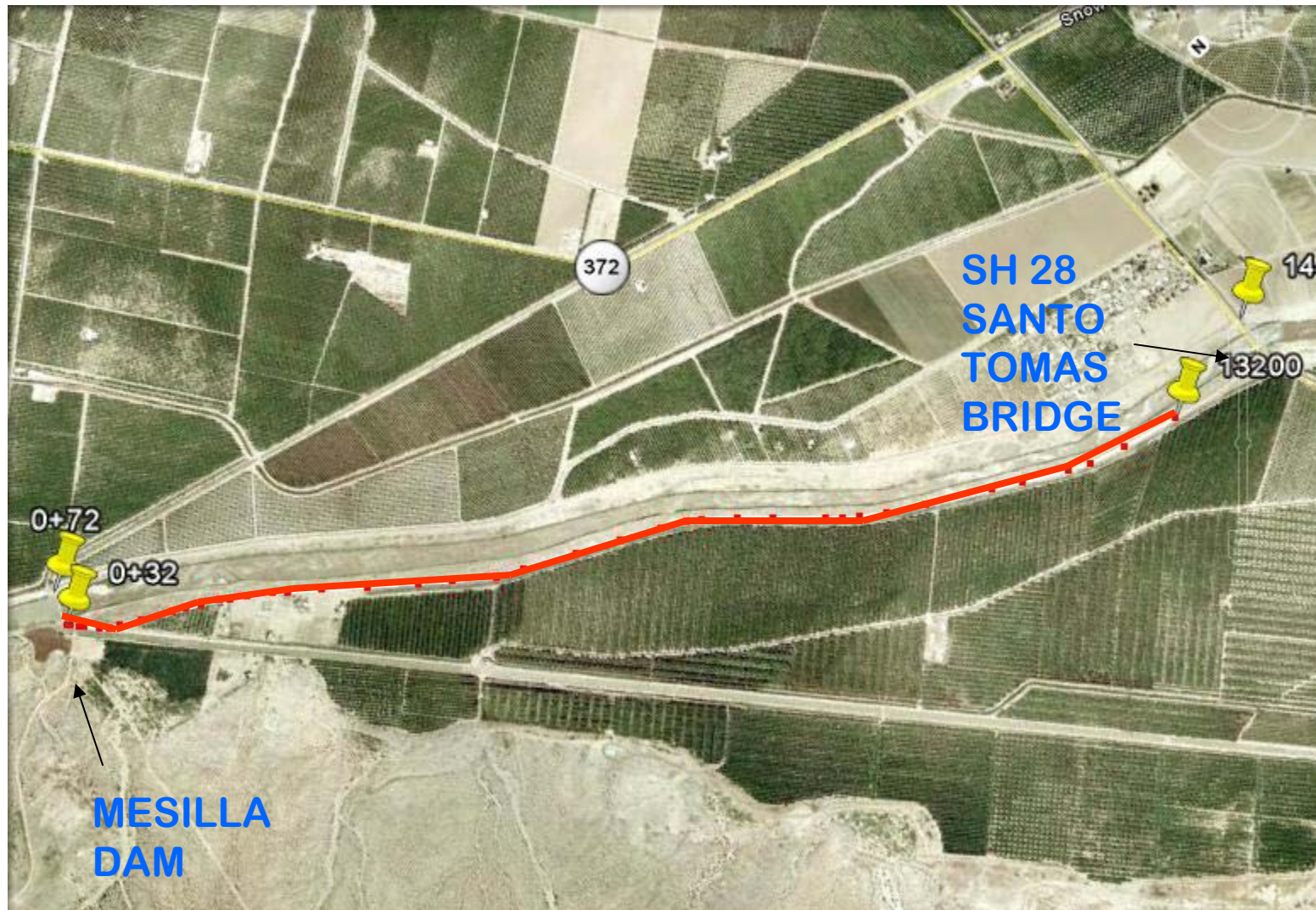
MESILLA WEST PHASE 1

MAY 17, 2010 TO SEPTEMBER 5, 2010



MESILLA WEST PHASE 1

MARCH 2, 2010 TO JUNE 6, 2010



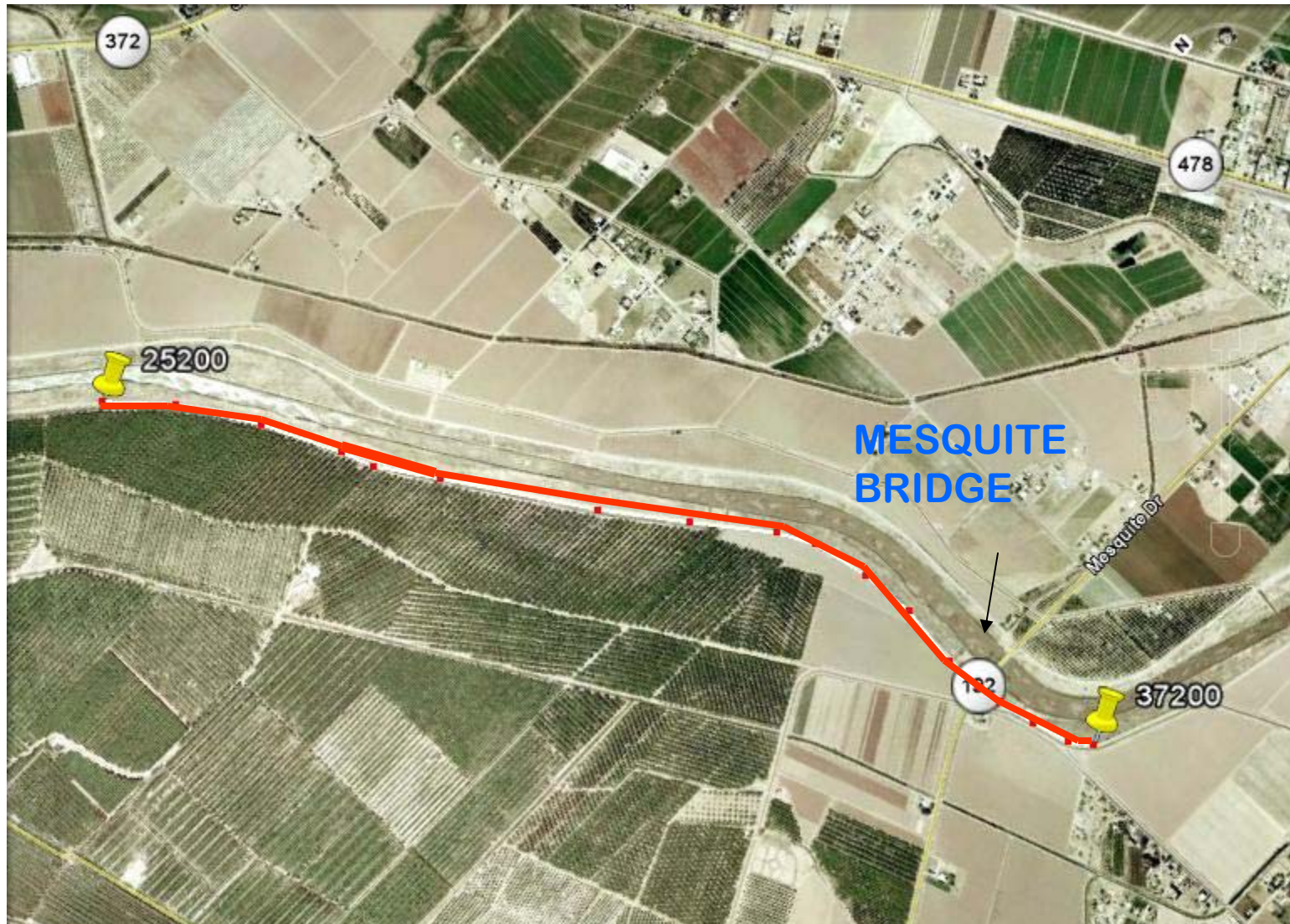
MESILLA WEST PHASE 1

MARCH 20, 2010 TO JULY 2, 2010



MESILLA WEST PHASE 1

APRIL 5, 2010 TO JULY 27, 2010



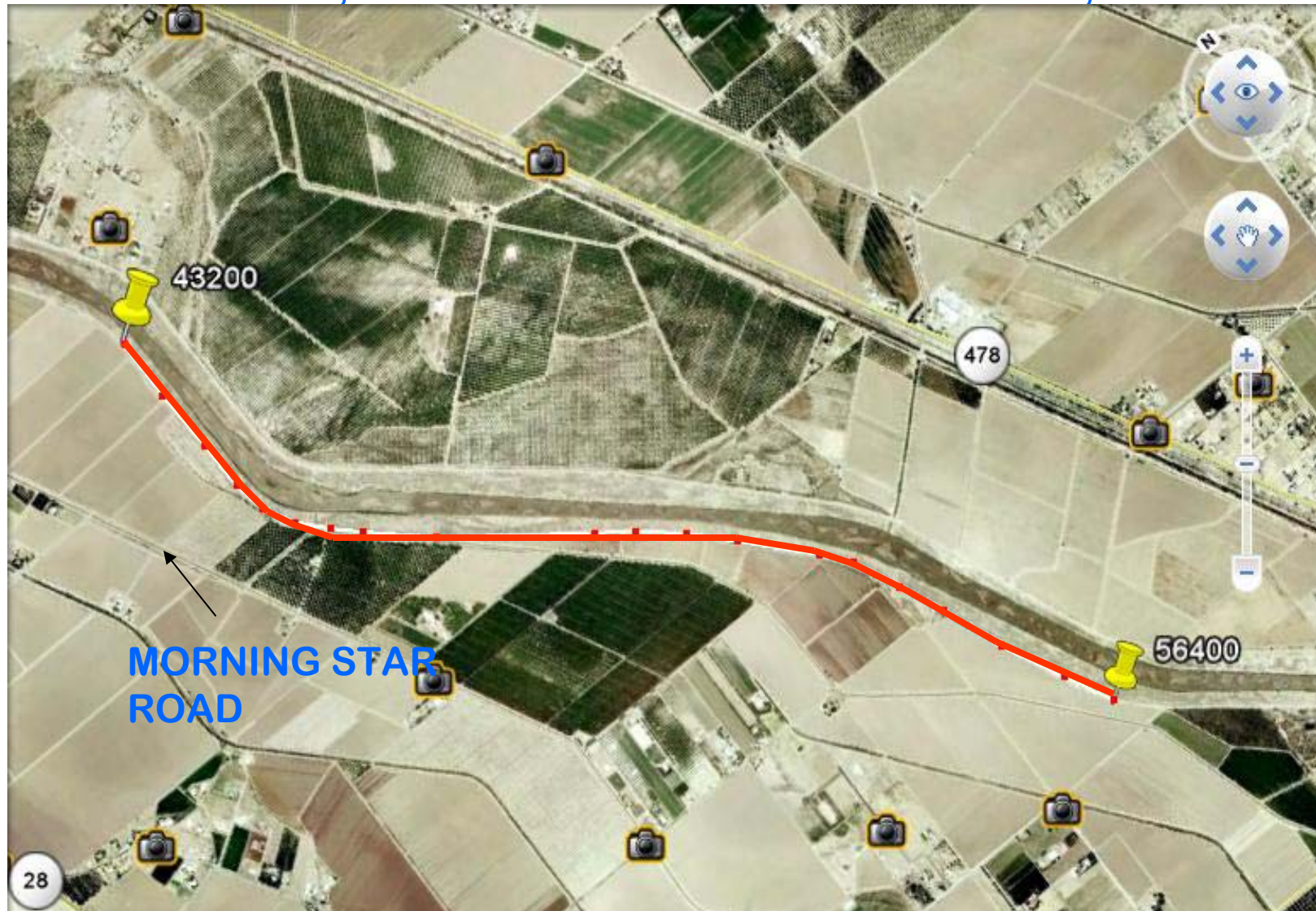
MESILLA WEST PHASE 1

MAY 10, 2010 TO AUGUST 29, 2010



MESILLA WEST PHASE 1

MAY 18, 2010 TO SEPTEMBER 13, 2010



MESILLA WEST PHASE 1

JUNE 4, 2010 TO OCTOBER 6, 2010



Levee Status – Doña Ana County

Mesilla East Phase 1

- ☐ East Levee
- ☐ Mesilla Dam to Vado Bridge Enhancement, Structure Improvements
 - Award Construction Contract December 2009
 - June 2010 to January 2011



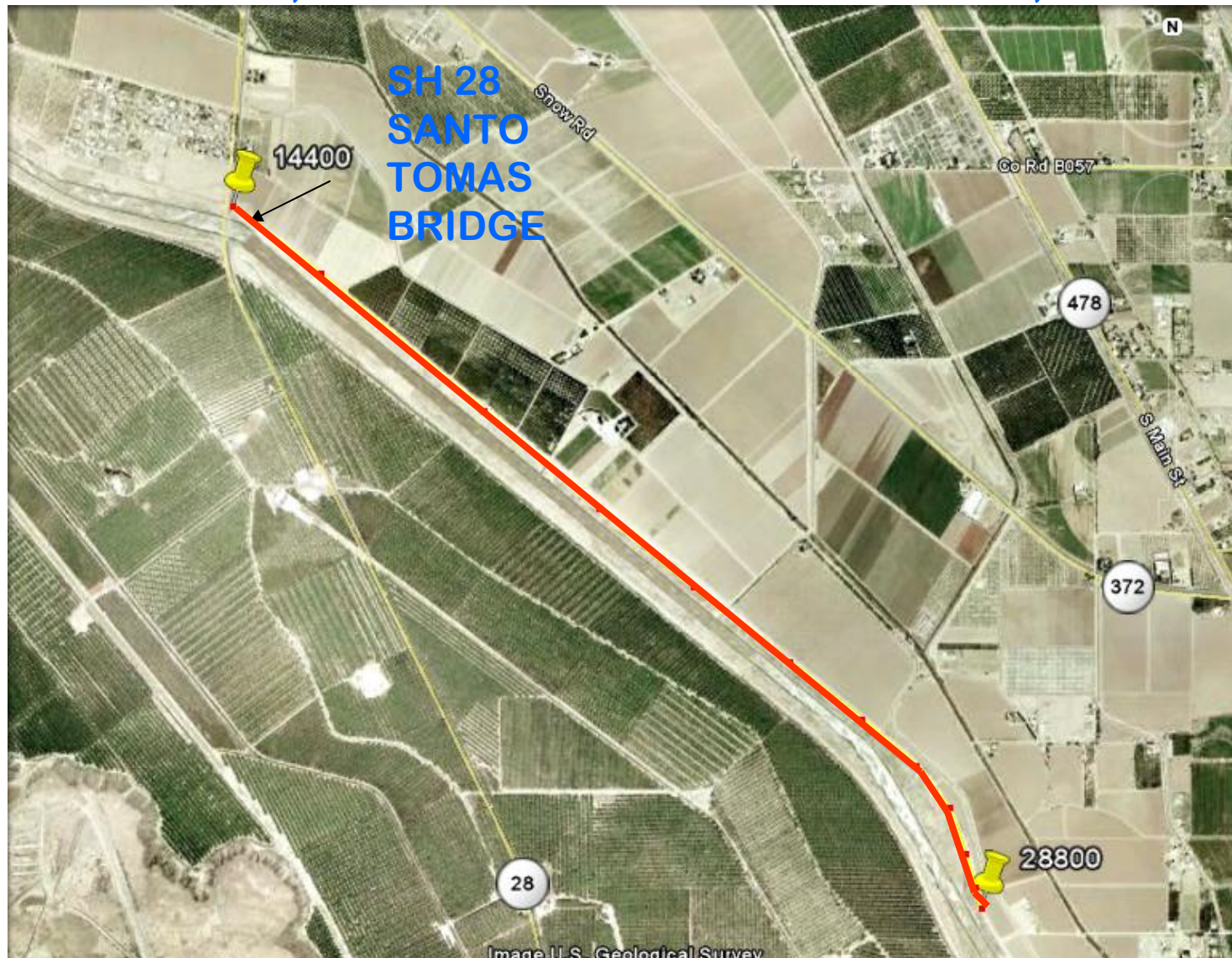
MESILLA EAST PHASE 1

JUNE 22, 2010 TO OCTOBER 29, 2010



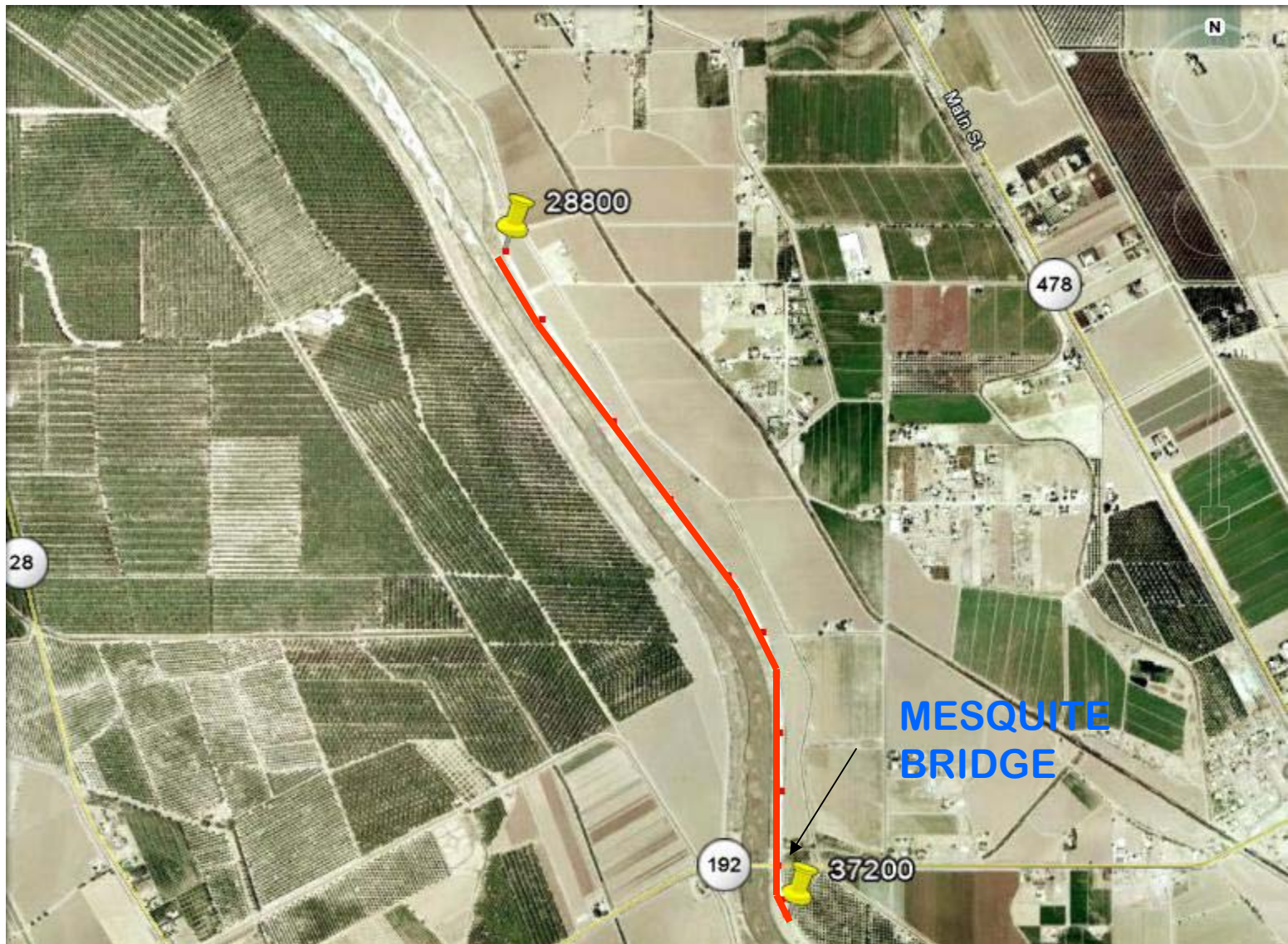
MESILLA EAST PHASE 1

JULY 12, 2010 TO NOVEMBER 22, 2010



MESILLA EAST PHASE 1

AUGUST 3, 2010 TO DECEMBER 14, 2010



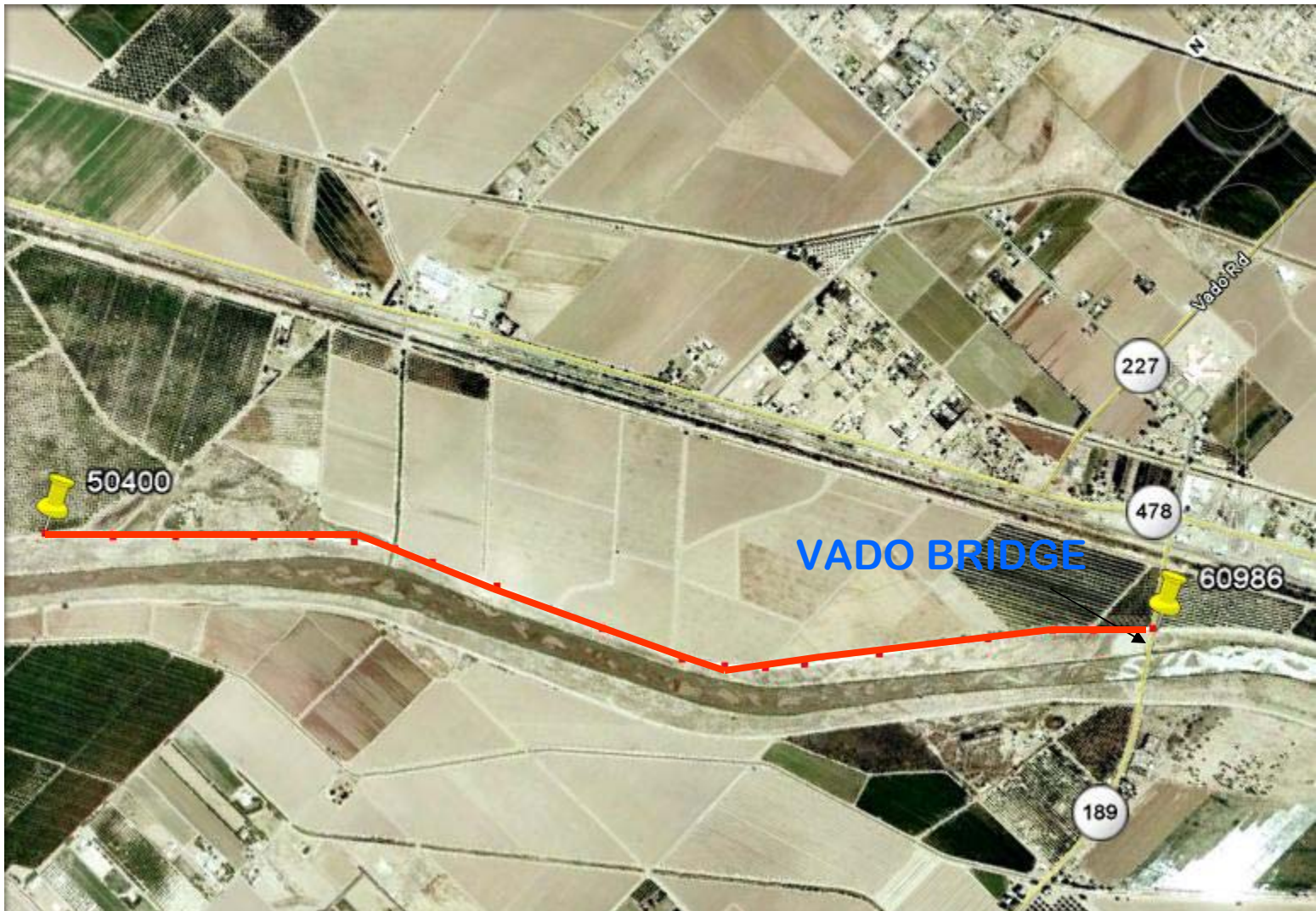
MESILLA EAST PHASE 1

SEPTEMBER 4, 2010 TO JANUARY 13, 2011



MESILLA EAST PHASE 1

OCTOBER 3, 2010 TO JANUARY 26, 2011



Haul Route Levees South of Mesilla Dam



Haul Route

Levees North of Mesilla Dam



Haul Route

Levees North of Vado Bridge



Levee Status – El Paso/Doña Counties

■ Canutillo Phase 1

- ☐ East Levee
- ☐ Vado Bridge to Vinton Bridge, Levee Enhancement, Structure Improvements
 - Award Construction Contract December 2009
 - March 2010 to February 2011

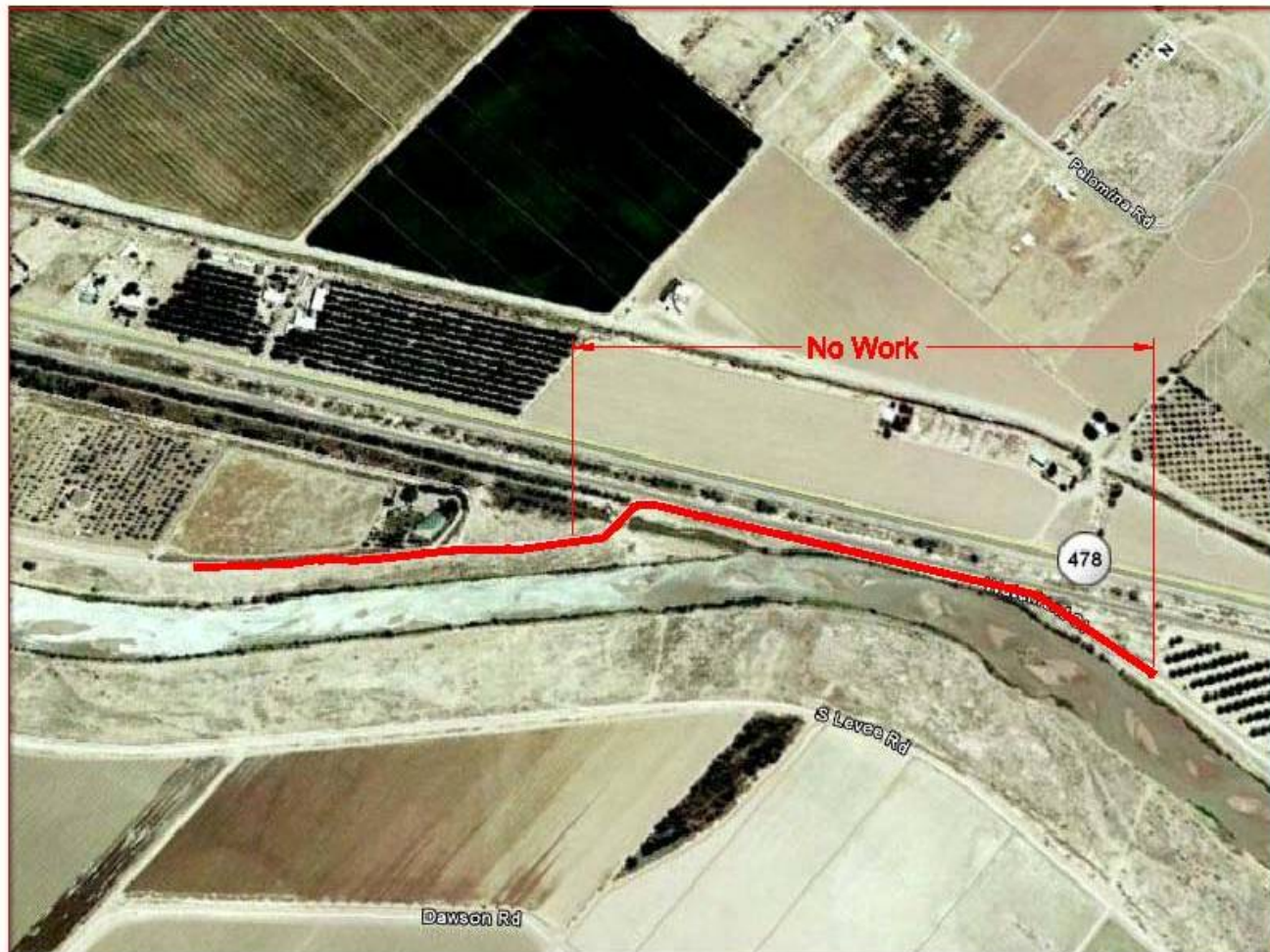


CANUTILLO EAST PHASE1 – EAST LEVEE ENHANCEMENT MAR. 26, 2010 TO APR. 22, 2010



CANUTILLO PHASE 1 – EAST LEVEE ENHANCEMENT

APRIL 14, 2010 TO MAY 11, 2010



CANUTILLO PHASE 1 – EAST LEVEE ENHANCEMENT

MAY 2, 2010 TO MAY 28, 2010



CANUTILLO PHASE 1 – EAST LEVEE ENHANCEMENT

MAY 20, 2010 TO JUNE 17, 2010



CANUTILLO PHASE 1 – EAST LEVEE ENHANCEMENT

JUNE 9, 2010 TO JULY 7, 2010



CANUTILLO PHASE 1 – EAST LEVEE ENHANCEMENT

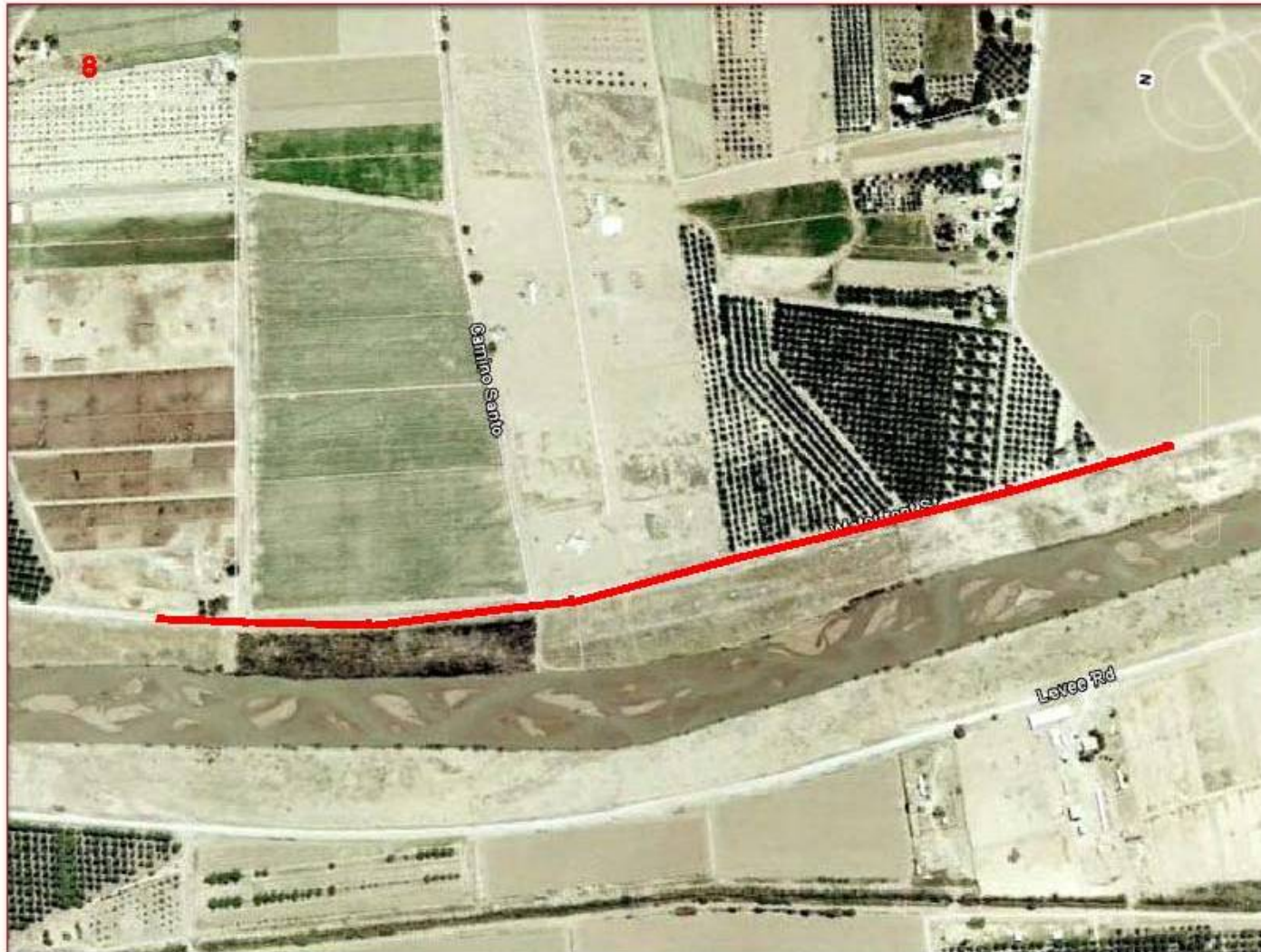
JUNE 15, 2010 TO JULY 26, 2010



CANUTILLO PHASE 1 – EAST LEVEE ENHANCEMENT JULY 7, 2010 TO AUGUST 12, 2010



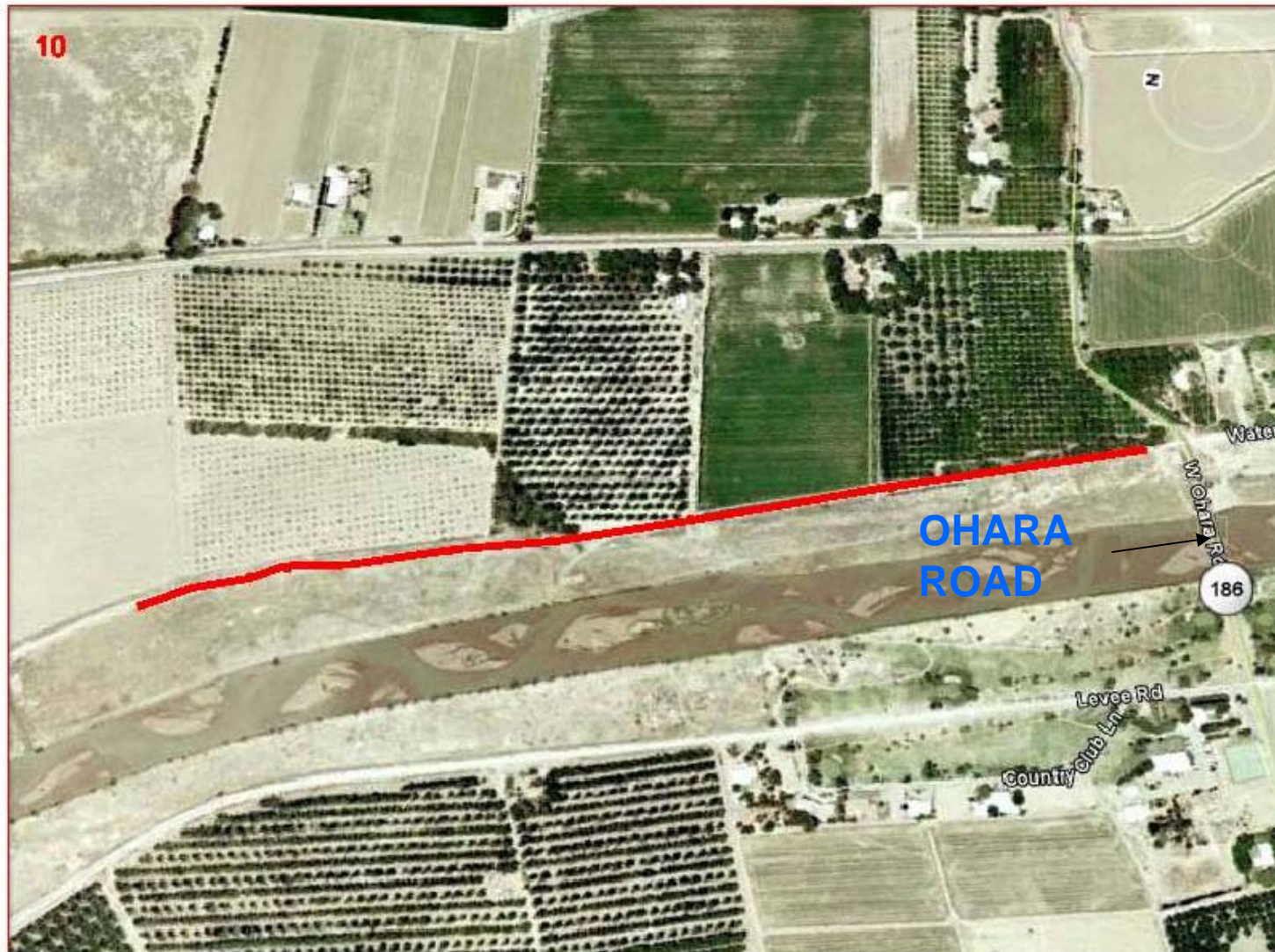
Age Group	Percentage
18-24	~2%
25-34	~45%
35-44	~35%
45-54	~25%
55-64	~15%
65-74	~10%
75-84	~5%
85+	~2%



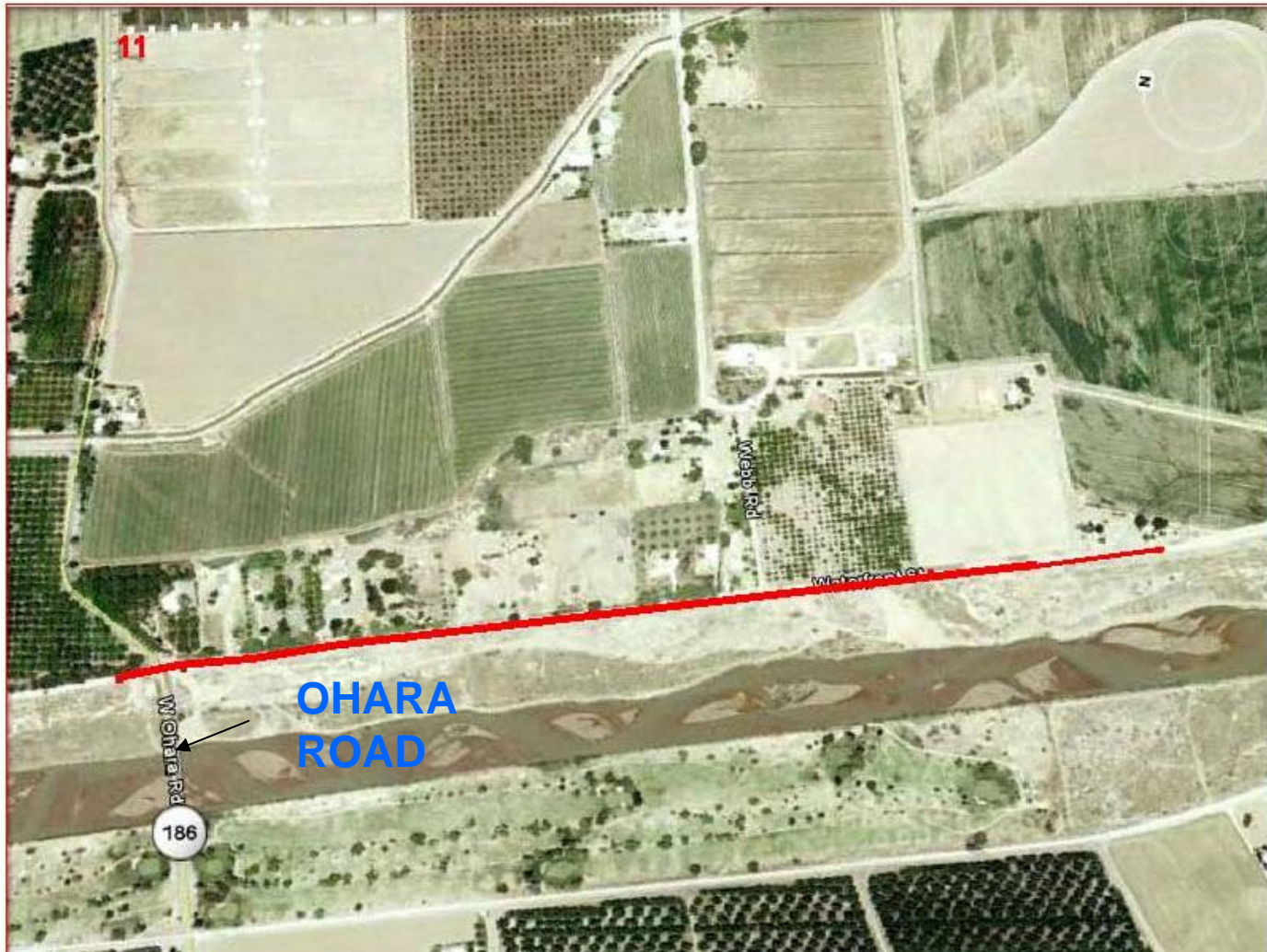
CANUTILLO PHASE 1 – EAST LEVEE ENHANCEMENT AUGUST 13, 2010 TO SEPTEMBER 20, 2010



CANUTILLO PHASE 1 – EAST LEVEE ENHANCEMENT SEPTEMBER 10, 2010 TO OCTOBER 7, 2010



CANUTILLO PHASE 1 – EAST LEVEE ENHANCEMENT SEPTEMBER 29, 2010 TO OCTOBER 26, 2010



CANUTILLO PHASE 1 – EAST LEVEE ENHANCEMENT OCTOBER 18, 2010 TO NOVEMBER 12, 2010



CANUTILLO PHASE 1 – EAST LEVEE ENHANCEMENT

NOVEMBER 4, 2010 TO DECEMBER 3, 2010



CANUTILLO PHASE 1 – EAST LEVEE ENHANCEMENT NOVEMBER 23, 2010 TO DECEMBER 22, 2010



CANUTILLO PHASE 1 – EAST LEVEE ENHANCEMENT DECEMBER 14, 2010 TO JANUARY 12, 2011



CANUTILLO PHASE 1 – EAST LEVEE ENHANCEMENT NOVEMBER 30, 2010 TO JANUARY 31, 2011



CANUTILLO PHASE 1 – EAST LEVEE ENHANCEMENT DECEMBER 9, 2010 TO FEBRUARY 28, 2011



Levee Status – Doña Ana/El Paso Counties

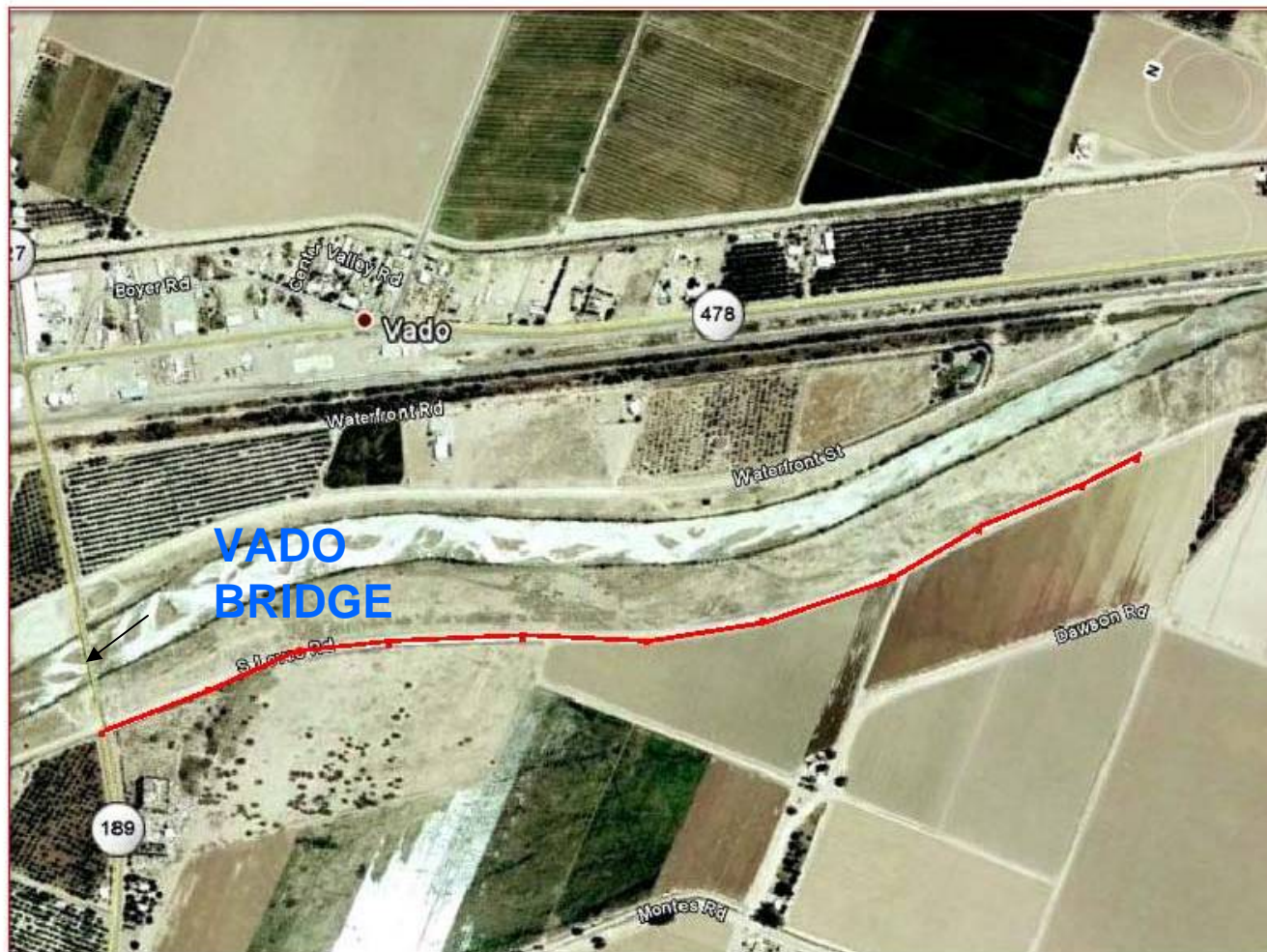
■ Canutillo Phase 1

- West Levee
- Vado Bridge to Borderland Bridge, Levee Enhancement, Structure Improvements
 - Award Construction Contract December 2009
 - Construct Flood Control Improvements March 2010- Feb. 2011



CANUTILLO PHASE 1 – WEST LEVEE ENHANCEMENT

MARCH 26, 2010 TO APRIL 21, 2010



CANUTILLO PHASE 1 – WEST LEVEE ENHANCEMENT

APRIL 13, 2010 TO MAY 7, 2010



CANUTILLO PHASE 1 – WEST LEVEE ENHANCEMENT

APRIL 13, 2010 TO MAY 7, 2010



CANUTILLO PHASE 1 – WEST LEVEE ENHANCEMENT

MAY 17, 2010 TO JUNE 11, 2010



CANUTILLO PHASE 1 – WEST LEVEE ENHANCEMENT

APRIL 22, 2010 TO JUNE 29, 2010



CANUTILLO PHASE 1 – WEST LEVEE ENHANCEMENT

JUNE 21, 2010 TO JULY 16, 2010



CANUTILLO PHASE 1 – WEST LEVEE ENHANCEMENT

MAY 14, 2010 TO AUGUST 3, 2010



CANUTILLO PHASE 1 – WEST LEVEE ENHANCEMENT MAY 28, 2010 TO AUGUST 19, 2010



CANUTILLO PHASE 1 – WEST LEVEE ENHANCEMENT

AUGUST 11, 2010 TO SEPTEMBER 7, 2010



CANUTILLO PHASE 1 – WEST LEVEE ENHANCEMENT

JUNE 1, 2010 TO SEPTEMBER 23, 2010



CANUTILLO PHASE 1 – WEST LEVEE ENHANCEMENT SEPTEMBER 15, 2010 TO OCTOBER 11, 2010



CANUTILLO PHASE 1 – WEST LEVEE ENHANCEMENT

JUNE 30, 2010 TO OCTOBER 27, 2010



CANUTILLO PHASE 1 – WEST LEVEE ENHANCEMENT OCTOBER 19, 2010 TO NOVEMBER 12, 2010



CANUTILLO PHASE 1 – WEST LEVEE ENHANCEMENT

JULY 8, 2010 TO DECEMBER 2, 2010



CANUTILLO PHASE 1 – WEST LEVEE ENHANCEMENT NOVEMBER 22, 2010 TO DECEMBER 20, 2010

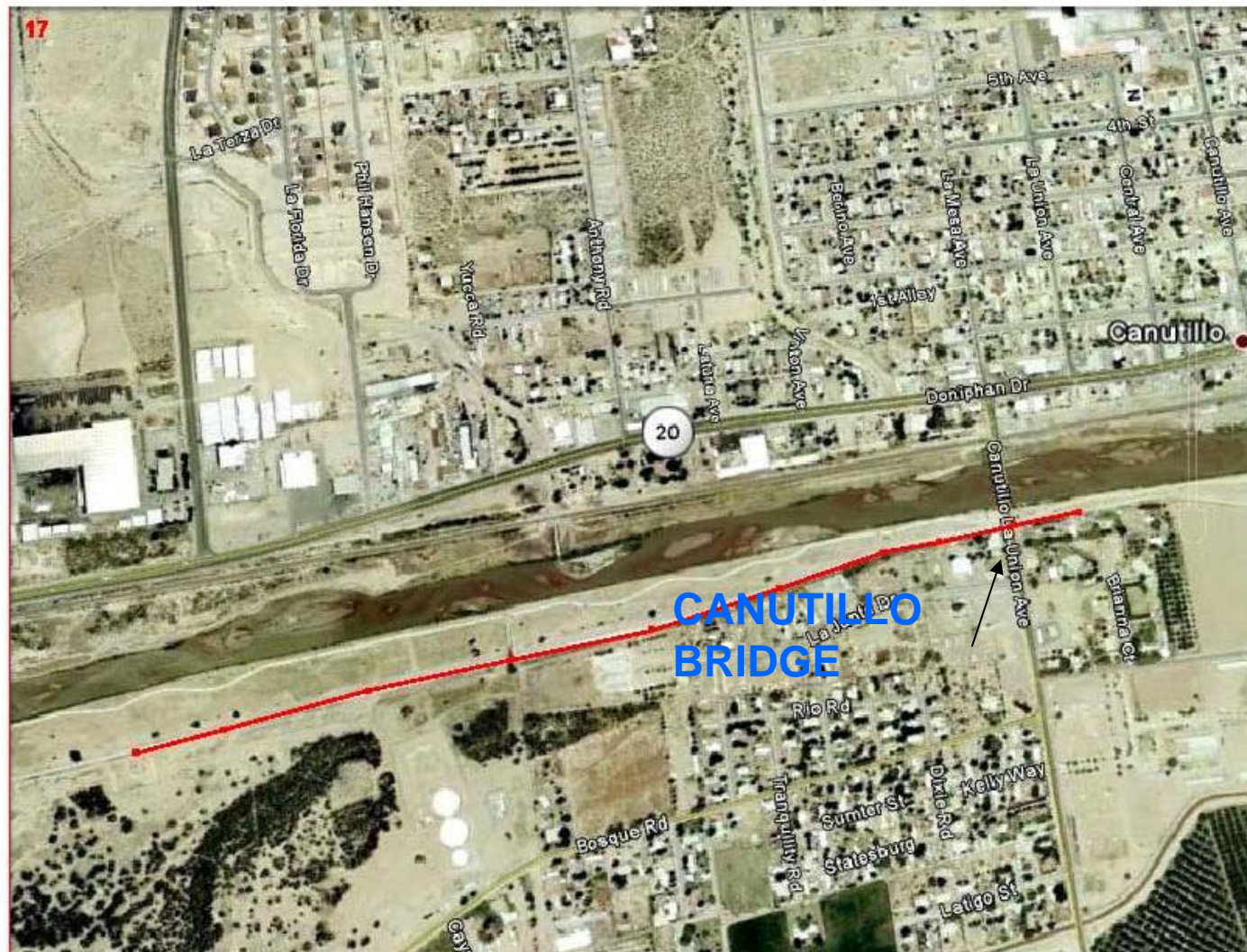


CANUTILLO PHASE 1 – WEST LEVEE ENHANCEMENT JULY 22, 2010 TO JANUARY 7, 2011

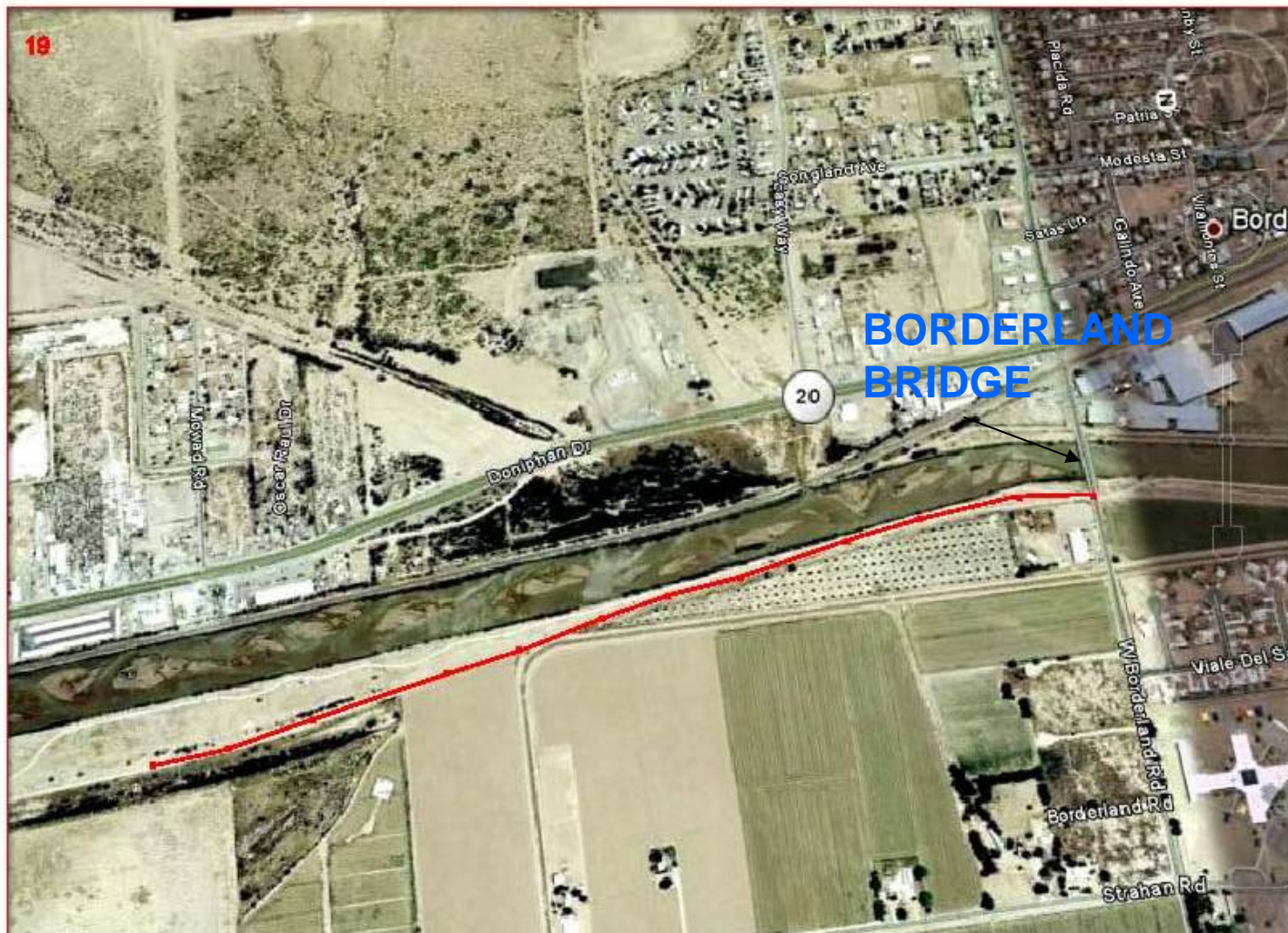


CANUTILLO PHASE 1 – WEST LEVEE ENHANCEMENT

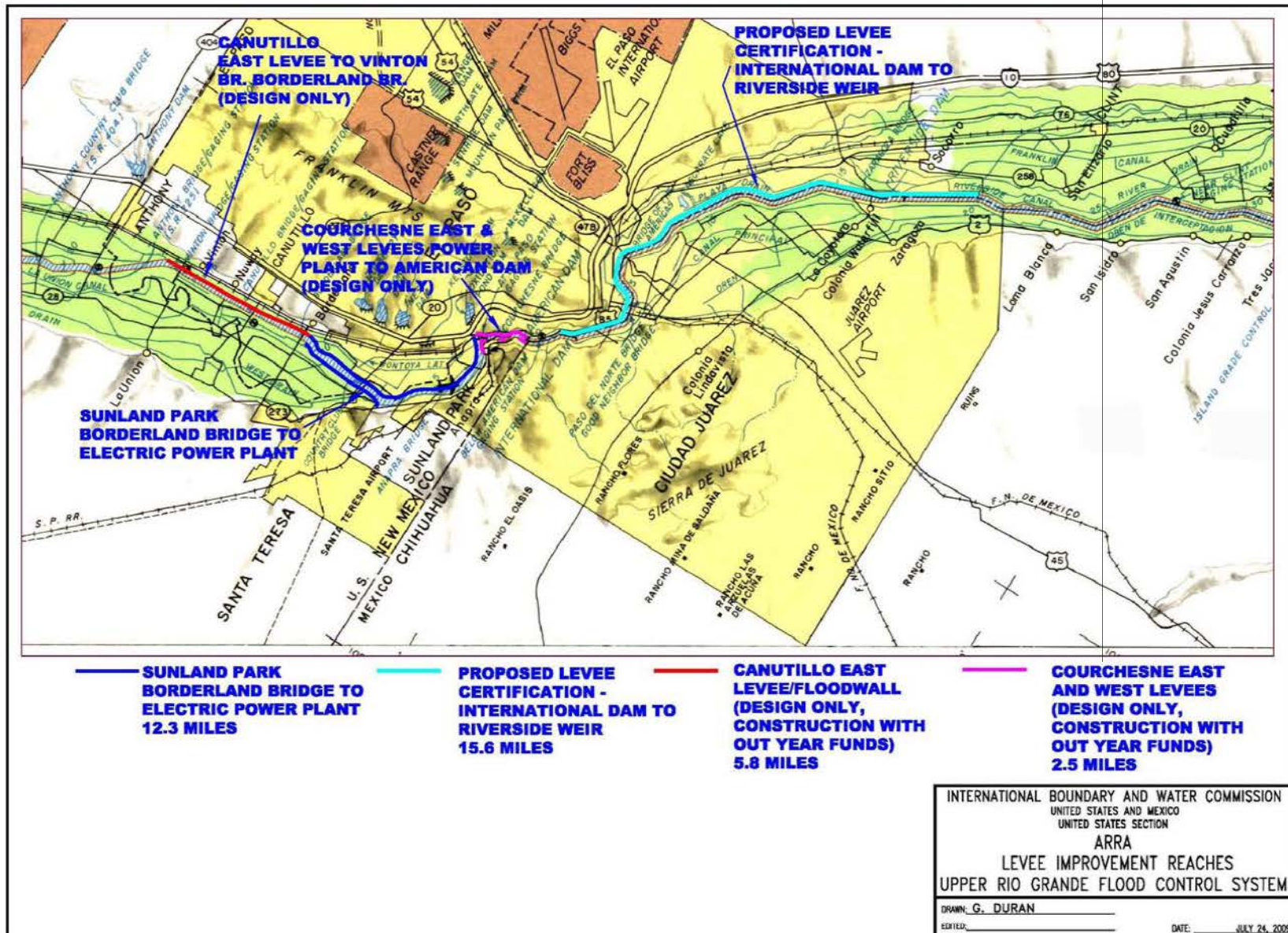
AUGUST 13, 2010 TO JANUARY 25, 2011



CANUTILLO PHASE 1 – WEST LEVEE ENHANCEMENT OCTOBER 19, 2011 TO FEBRUARY 28, 2011



Levee Status – El Paso and Doña Ana Counties



Levee Status – El Paso and Doña Ana Counties

■ Canutillo Phase 2

- East Levee
- Vinton Bridge to Borderland Bridge

- USIBWC to contract for Design Services by September 30, 2010
- Construction with out year funds



Levee Status – El Paso County and Doña Ana Counties

■ Sunland Park (Upper Valley)

- East and West Levees
- Borderland Bridge to Rio Grande Power Plant
 - Work initiated with USIBWC in-house crews
 - Remaining work to be awarded to a Contractor
 - Construction July 2010 to July 2011



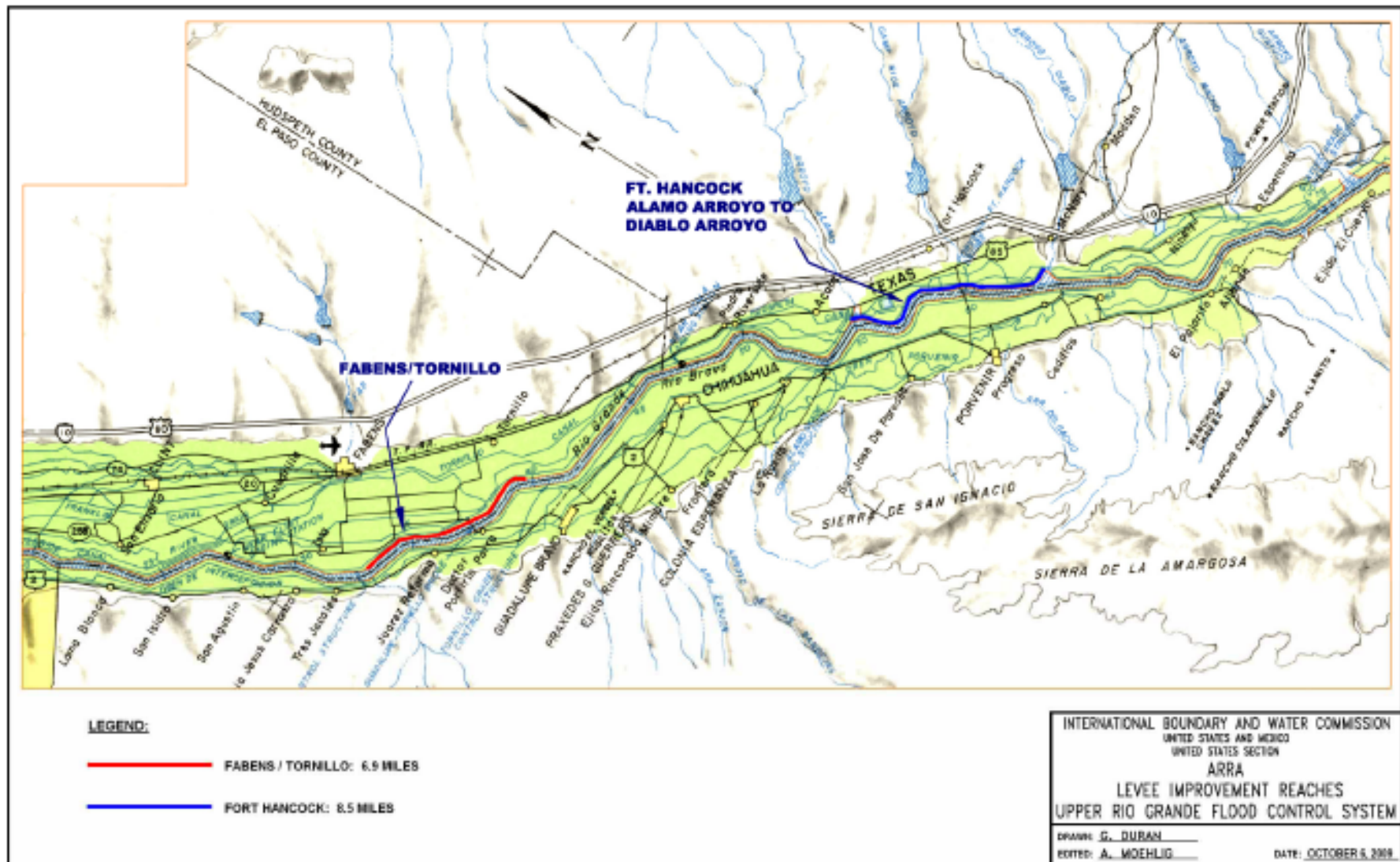
Levee Status – El Paso County

■ El Paso Levee

- International Dam (Old Hacienda Café to downstream of Zaragoza Bridge)
- Work Completed by In-house forces
- USIBWC will present FEMA accreditation documents by early April 2010



Levee Status – El Paso and Hudspeth Counties



Levee Status – El Paso / Hudspeth Counties

■ Fabens / Ft Hancock Levee

- Currently being designed
- Construction May 2010-June 2011



LEVEE ENHANCMENT EQUIPMENT ON LEVEE



LEVEE ENHANCEMENT EQUIPMENT



In-House Levee Enhancement Mesilla Valley



RECOVERY ACT LINKS

- <http://www.ibwc.gov/Recovery/Index.html>
(overview of USIBWC Recovery Act, with additional links)
- http://www.ibwc.state.gov/Files/URG_Schedule.pdf (weekly updates on Upper Rio Grande levee rehab, including schedules)
- www.recovery.gov (federal government, all agencies)
- www.state.gov/recovery (State Department)
- www.FedBizOpps.Gov (info for contractors)
- www.oig.state.gov (to report suspected fraud)



INTERNATIONAL BOUNDARY AND WATER COMMISSION, UNITED STATES AND MEXICO



Contact Information

Gabriel Duran (915) 832-4746

Tony Solo (915) 351-1030

Cesar Boisselier (915) 351-1030

www.ibwc.state.gov