



Public Access to Construction Areas

International Boundary and Water Commission

United States Section

Engineering Services Division

March 29, 2011



International Boundary and Water Commission United States Section

Current construction is temporarily affecting four local parks and river trails.

- Sunland Park River Trail
- Rio Grande River Regional Park
- Mesilla Valley Bosque State Park
- La Llorona Park



International Boundary and Water Commission United States Section

Vehicular gates along the levee have been removed during construction.

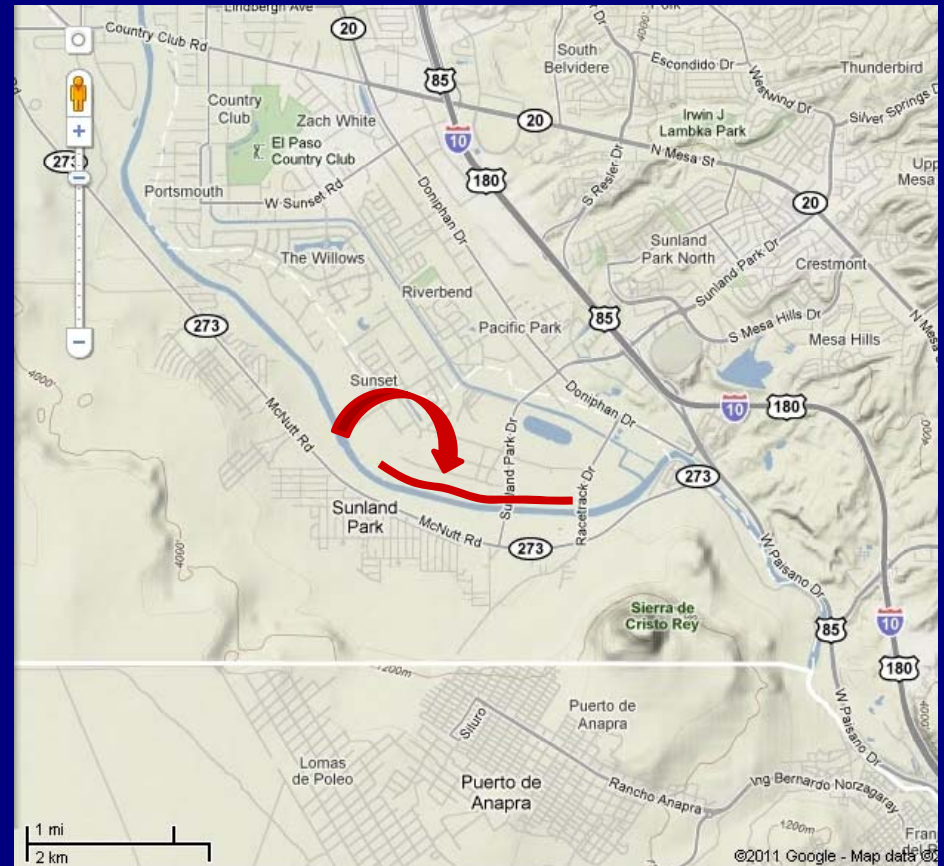
- Contractors are required to remove gates for rehabilitation.
- All gates will be replaced prior to completion of construction.



International Boundary and Water Commission United States Section

Sunland Park River Trail

- Access to trail available at Racetrack Bridge contingent upon construction activities.
- People should not go around construction gates to access levee or trails.
- Construction scheduled for completion by February 2012*.



* Construction may be extended due to unforeseen circumstances.



International Boundary and Water Commission United States Section



Sunland Park River Trail.



Parking area near Racetrack Dr.



International Boundary and Water Commission United States Section



Parking area near Racetrack Drive
is currently open.



Levee access closed throughout
Sunland Park project.



International Boundary and Water Commission United States Section



Country Club Road.



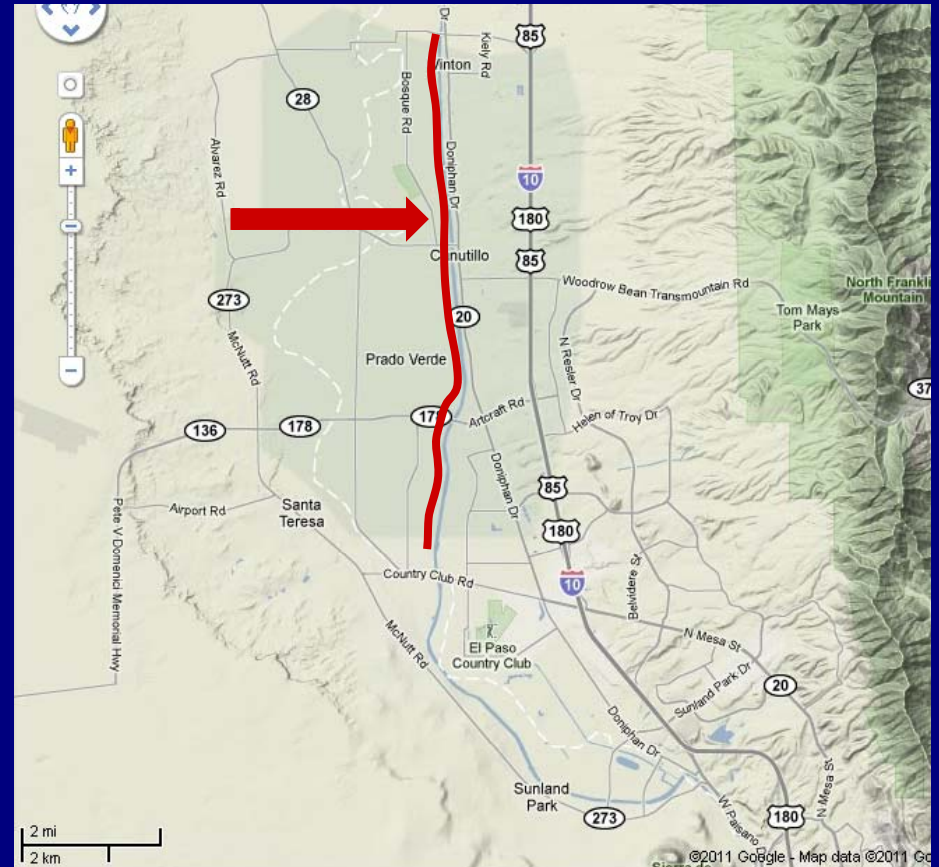
All levee access closed at Country Club Road.



International Boundary and Water Commission United States Section

Rio Grande River Regional Park

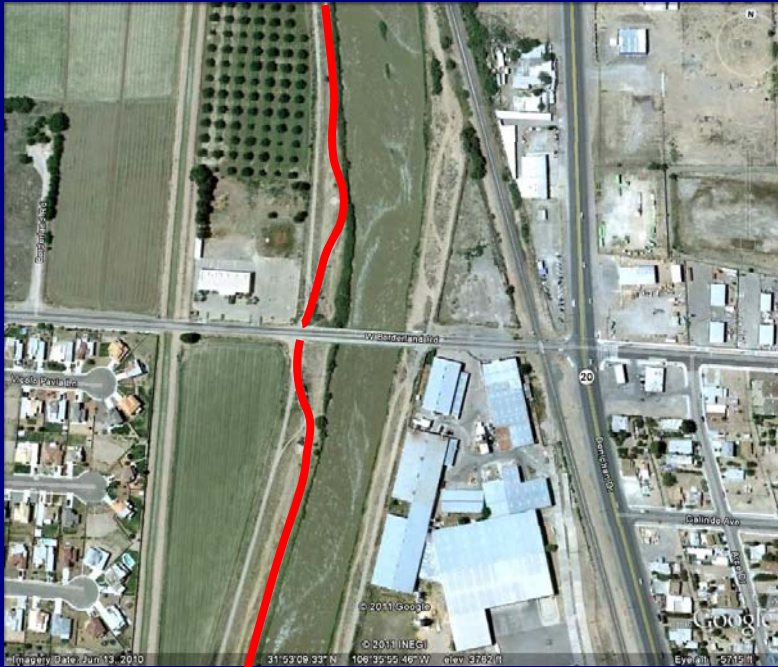
- Open north of Borderland Bridge with impacted areas during construction.
- Removed sidewalks will be rebuilt.
- Construction scheduled for completion by May 2011*.



* Construction may be extended due to unforeseen circumstances.



International Boundary and Water Commission United States Section



Borderland Road.



River trail only accessible on north
side of Borderland Road.



International Boundary and Water Commission United States Section



Canutillo Bridge – La Union Ave.



River trail is accessible on both sides of La Union Avenue.



International Boundary and Water Commission United States Section



Vinton Road.



River trail is accessible on south side of Vinton Road.



International Boundary and Water Commission United States Section



Areas of river trail are buried.



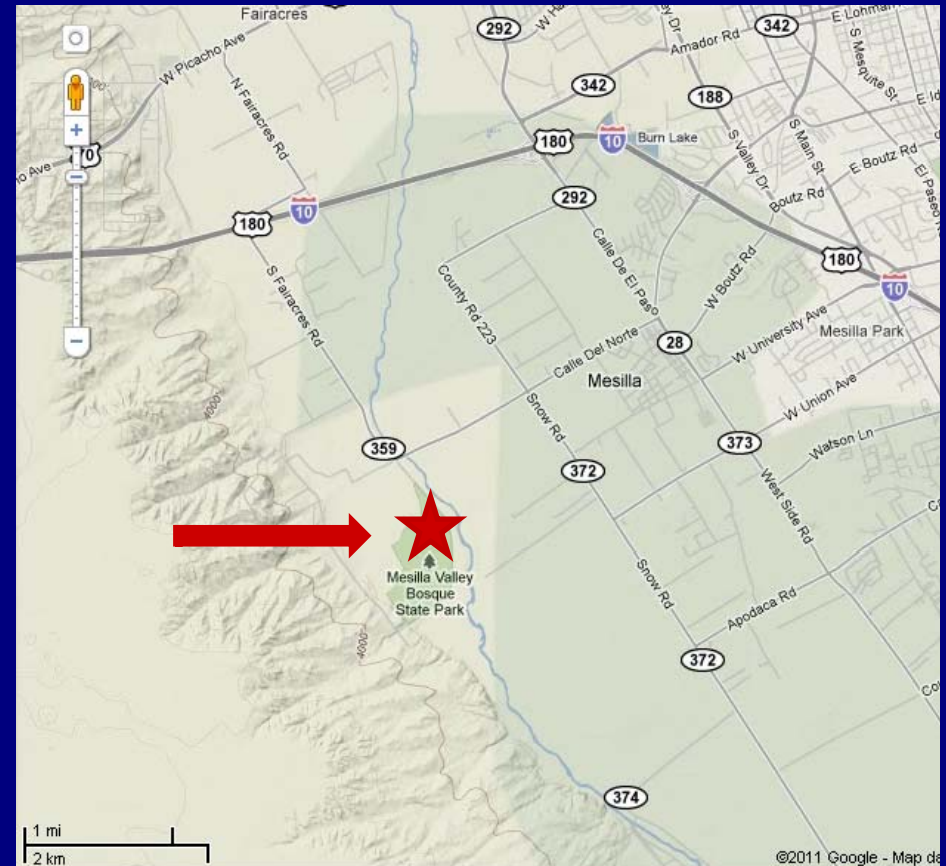
Removed sidewalks will be replaced.



International Boundary and Water Commission United States Section

Mesilla Valley Bosque State Park

- Completely open during construction.
- Traffic detours may be in place.
- Pedestrians must watch for haul trucks when walking to trails.
- Construction scheduled for completion by August 2011*.



* Construction may be extended due to unforeseen circumstances.



International Boundary and Water Commission United States Section



Mesilla Valley Bosque State Park
access road.



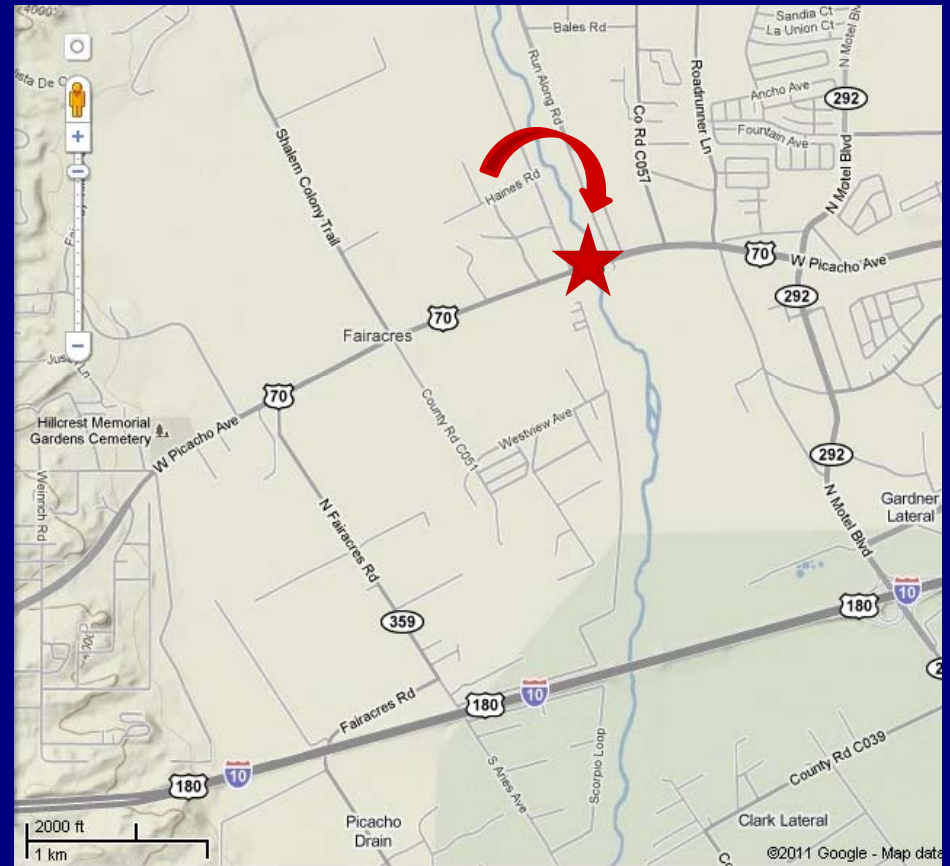
There are some traffic detours and
pedestrian impacts, but park is open.



International Boundary and Water Commission United States Section

La Llorona Park

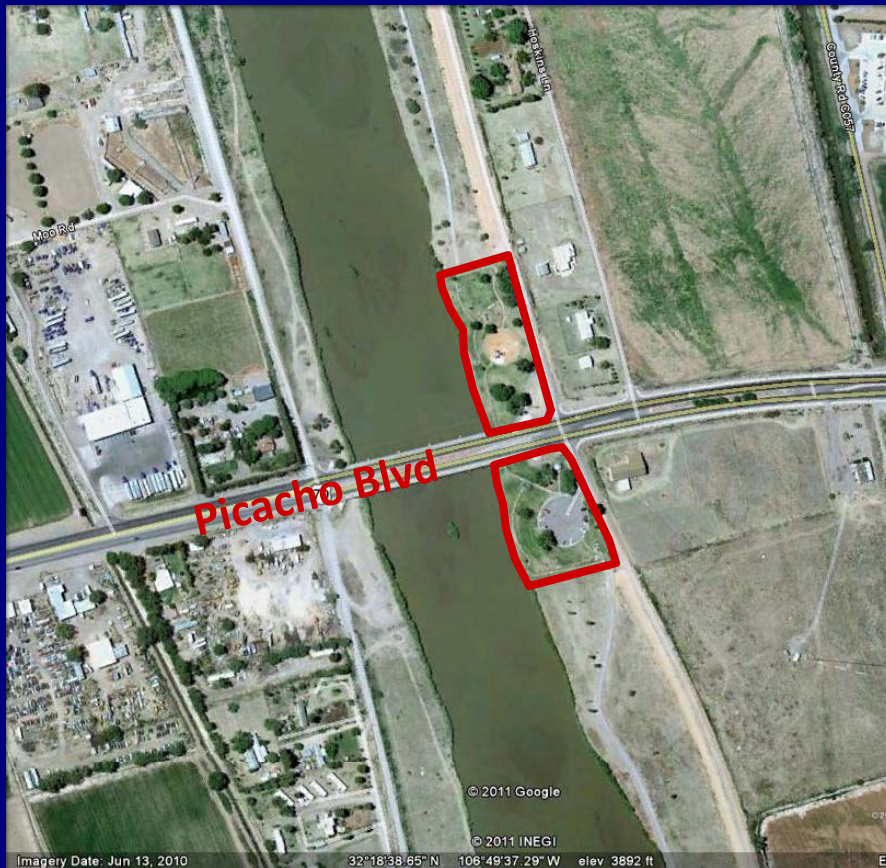
- During construction, half of the park will be open at a time.
- Trees growing on or very near levee will be removed.
- Removed sidewalks will be rebuilt.
- Construction scheduled for completion by July 2011*.



* Construction may be extended due to unforeseen circumstances.



International Boundary and Water Commission United States Section



La Llorona Park in Las Cruces



International Boundary and Water Commission United States Section



North side of La Llorona Park.



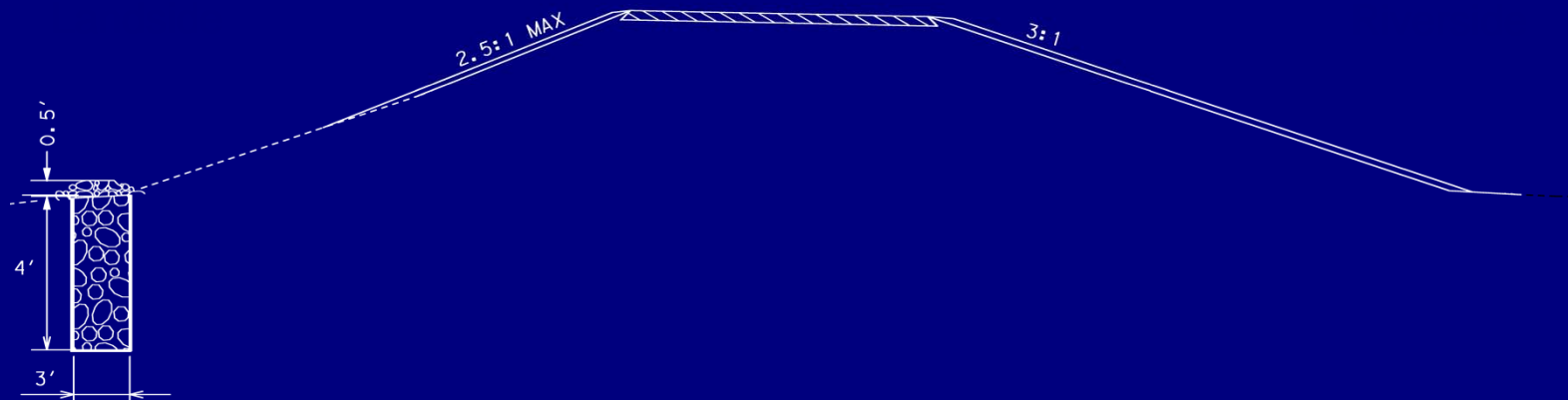
South side of La Llorona Park.



International Boundary and Water Commission United States Section

A toe drain is being constructed along large lengths of the landside levee toe.

- Toe drain is 4 feet deep and 3 feet wide.
- Toe drain is placed within IBWC right-of-way (ROW).





International Boundary and Water Commission United States Section



Toe drain trench is dug and lined
with geotextile.



The trench is filled with gravel.



International Boundary and Water Commission United States Section



Geotextile is folded over top of gravel.



Six inches of gravel is placed on top of folded geotextile to complete toe drain.



International Boundary and Water Commission United States Section



- Do not park in construction areas
- Do not park in front of construction gates.
- Do not park at access points on bridges.



International Boundary and Water Commission United States Section

CONSTRUCTION
AREA
DO NOT ENTER

Construction Areas are UNSAFE



Do not go around gates.
Stay on open trails.



Do not use levee during construction.



International Boundary and Water Commission United States Section



Scapers can weigh almost
200,000 lbs and travel 34 mph.



Water wagons carry 8,000 gallons of
water and also travel over 30 mph.



International Boundary and Water Commission United States Section



Front end loaders can weight 70,000 lbs
and carry an additional 50,000 lbs.



Motor graders are over 30,000 lbs
and can travel 29 mph.



International Boundary and Water Commission United States Section



Excavators come in many sizes. They can swing 360° quickly.



There is no front and back. They can travel either direction without warning.



International Boundary and Water Commission United States Section



NOTICE

You have entered U.S. Government Property
U.S. International Boundary and Water Commission
This is a Flood Control Area Subject to Flooding

ENTER AT YOUR OWN RISK!

No weapons!

No hunting!

No motorized vehicles!

No alcoholic beverages or illegal substances!

No dumping!

No camping!

Towards the end of construction, new IBWC signs will be placed at all major access points.



International Boundary and Water Commission United States Section

After construction completion, levees will be built to current FEMA standards.

- Trails and parks will return to preconstruction access conditions.
- Removed gates will be replaced.
- Areas disturbed by construction activities will be reseeded.