

Rio Grande Canalization Conceptual Restoration Project

United States Section,
International Boundary and Water
Commission

Daniel Borunda
December 15, 2009



Restoration Plan

- 30 Restoration sites developed by Corps
- Total estimated cost of \$5,159,363.00
- Projects located throughout the 105-mile Flood Control Project (from below Percha to American Diversion Dam)
- Record of Decision signed June 4, 2009 commits to implementation

Implementation

- 10-year implementation period
 - Phase 1 – Year 1-5 studies and pilot projects
 - Phase 2 – Year 6-10 complete implementation
- Grazing Leases – Phased out
- Adaptive Management will guide the implementation of environmental measures



Subreach 1 - Percha to Hatch Siphon

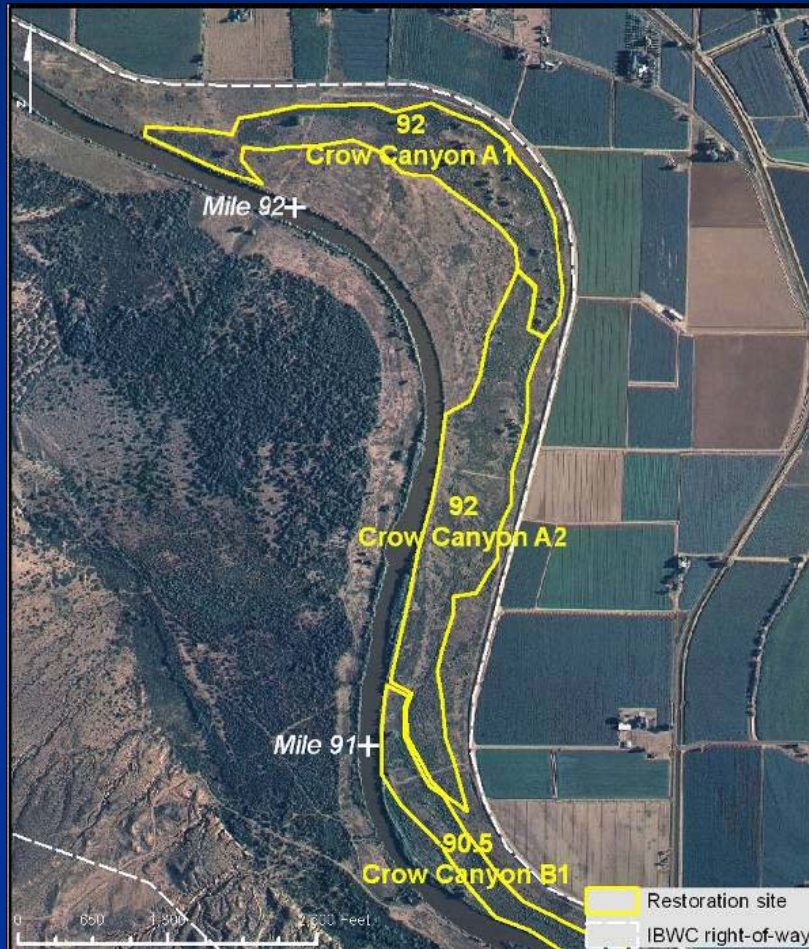
Site Number	Site Name	River Mile and Bank	Acres	Target Riparian habitat(s)	Restoration Cost
1	Trujillo	103 W	14.0	Dense riparian shrubs (SWWF)	\$115,225
2	Jaralosa	94.9 E	4.5	Open riparian woodland	\$157,350
3	Yeso Arroyo	94 W	10.6	Aquatic Habitat	\$5,165
4	Yeso East	93.7 E	9.7	Open riparian woodland	\$171,610
5	Yeso West	93.5 W	2.5	Aquatic Habitat	\$12,260
6	Crow Canyon A	92 E	90.0	Riparian savanna & shrubland	\$213,925
7	Crow Canyon B	90.5 E	25.6	Dense riparian shrubs (SWWF) & meadow	\$69,980

Yeso East and West



Yeso East is a 9.7-acre, shallow depression (likely a former channel meander) through the center of the site.

Crow Canyon Sites



Crow Canyon A1 and A2 total 90 acres; Target habitat riparian savanna and shrubland.

Significant improvement in habitat quality would be realized by the cessation of mowing.

Subreach 2 - Hatch Siphon Head of Seldon Canyon

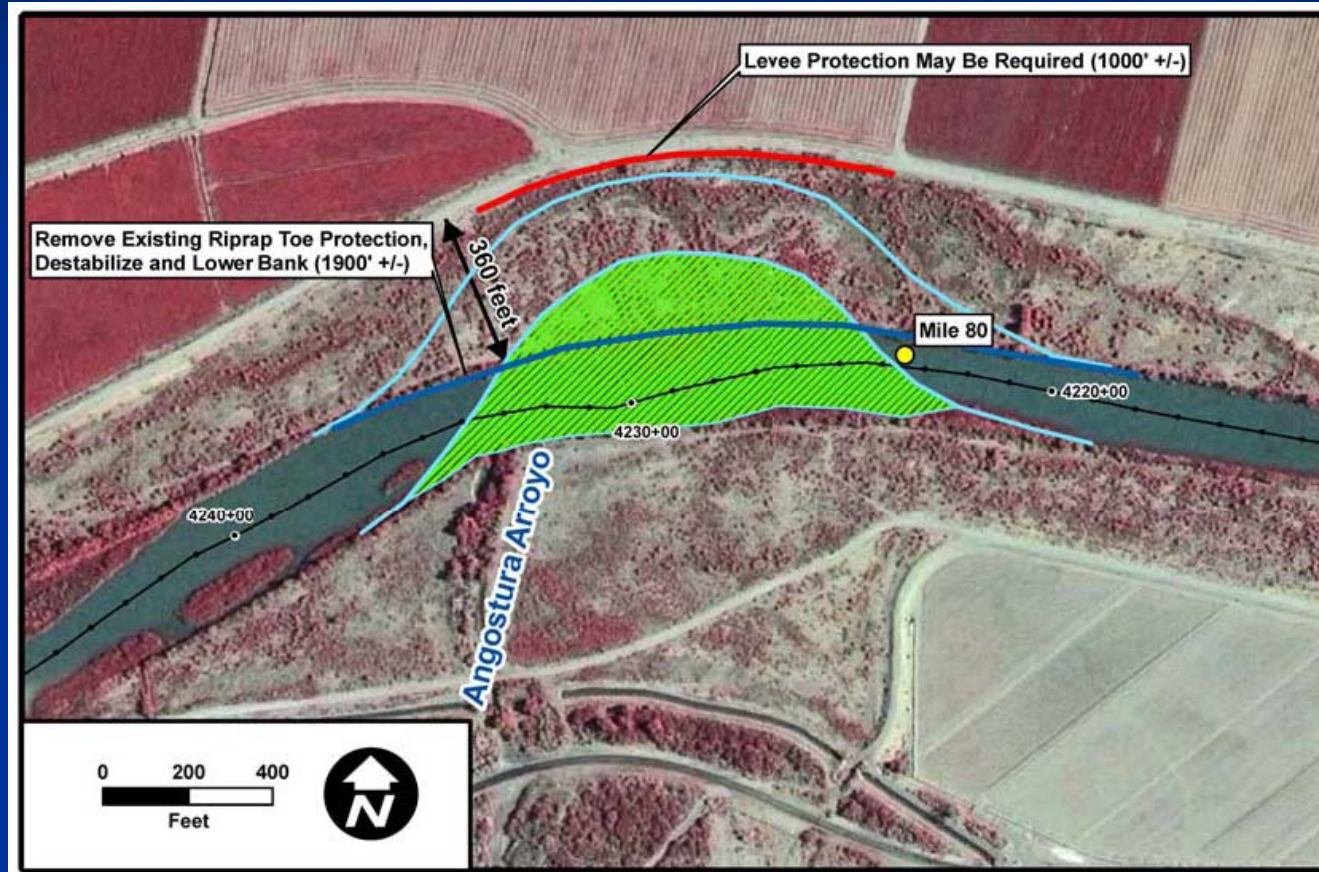
Site Number	Site Name	River Mile and Bank	Acres	Target Habitat	Restoration Cost
8	Placitas Arroyo	85 W	21.8	Aquatic Habitat	\$4,010
9	Rincon Siphon	82.5 E	16.3	Dense Riparian Shrubs (SWWF)	\$193,225
10	Angostura Arroyo	80 W	15.4	Aquatic Habitat	\$5,100
11	Lack Property (Private)	71.5 E	51.0	Dense riparian shrubs (SWWF)	\$831,905

Rincon Siphon



This site consists of two parcels, 4.5 and 11.8 acres in size that could potentially be inundated by the target restoration releases

Angostura Arroyo Site



Improved in-channel aquatic habitat.

Subreach 3 - Head of Seldon Canyon to Leasburg Diversion Dam

Site Number	Site Name	River Mile and Bank	Acres	Target Habitat	Restoration Cost
13	Broad Canyon Ranch Middle (NMSP)	67 W	13.8	Saltgrass Meadow	\$64,500
14	Broad Canyon Ranch South (NMSP)	66.8 W	20.6	Saltgrass Meadow	\$80,420
15	Seldon Point Bar (Private)	66 E	6.9	Dense riparian Shrubs (SWWF)	\$201,345
16	Bailey Point Bar (Private)	64 E	16.6	Dense riparian Shrubs (SWWF)	\$229,570

Subreach 4 - Leasburg Diversion

Dam to Picacho Bridge

Site Number	Site Name	River Mile and Bank	Acres	Target Habitat	Restoration Cost
17	Shalem Colony	50.5 E	14.2	Screwbean mesquite & Riparian grassland	\$5,000
18	Leasburg Extension	47.8 E	4.1	Dense Riparian Shrubs (SWWF)	\$117,600

Shalem Colony Site



As per June 2009 ROD, this 14.2 acre site will be made a permanent no-mow zone.

Subreach 5 - Picacho Bridge to Mesilla Diversion Dam

Site Number	Site Name	River Mile and Bank	Acres	Target Habitat	Restoration Cost
19	Clark Lateral	43.5 E	6.0	Dense Riparian Shrubs (SWWF)	\$147,335
20	Mesilla Valley Bosque Park	41.5 W	31.8	Riparian forest, shrubland, meadow & grassland	\$112,710
21	Mesilla East	41 E	15.8	Dense Riparian Shrubs (SWWF)	\$486,370

Clark Lateral



A check dam and turnout within the Clark Lateral outfall channel would facilitate water delivery to a 6-acre cell, and surface flow would return to the wastewater outflow channel.

Target habitat: dense riparian shrubs (4.5 acres) and riparian forest (1.5 acres).

Subreach 6 - Mesilla Diversion Dam to Vinton Bridge

Site Number	Site Name	River Mile and Bank	Acres	Target Habitat	Restoration Cost
22	Berino West	25.5 W	10.3	Dense Riparian Shrubs (SWWF)	\$282,720
23	Berino East	24.5 E	9.5	Dense Riparian Shrubs (SWWF) & forest	\$221,035
24	Vinton A	17 W	14.7	Riparian Forest	\$171,228
25	Vinton B	16 W	20.0	Riparian Woodland	\$201,500

Vinton A Site



The 14.7-acre Vinton A site is on the west bank of the river upstream from the Vinton Bridge.

This site was selected for the potential to over bank flood based on the FLO-2D model.

Subreach 7 – Vinton Bridge to American Diversion Dam

Site Number	Site Name	River Mile and Bank	Acres	Target Habitat	Restoration Cost
26	Valley Creek	9 W	22.0	Riparian Woodland	\$179,150
27	Nemexas Siphon	7 W	16.7	Dense riparian shrubs (SWWF)	\$276,690
28	Country Club East	6.8 E	29.0	Riparian forest and woodland	\$330,815
29	Sunland Park	4 E	28.8	Riparian woodland	\$236,570
30	Anapra Bridge	3 E	11.0	Open riparian woodland	\$35,050

Nemexas Siphon



The site is vegetated by a dense stand of the saltcedar, one of the largest stands found along the river downstream from Selden Canton. Several mature cottonwoods are present and coyote willow occurs in small patches, mixed with saltcedar.

Site has great potential for SWWF habitat as they migrate north.

Stakeholder Input

- Meetings with key stakeholders conducted October 23rd and October 29, 2009
- Purpose was to prioritize the sites for Phase 1 Implementation
- American Recovery and Reinvestment Act of 2009 – USIBWC committed 1.5 million
- Need to implement some of the projects by September 2010

Current Status

- Identified projects by subreach
- Ecological benefit
- Cluster projects for each of the 7 subreaches
- Workgroup members have differing priorities and recommendations
- Additional data gathering activities required:
 - SWWF surveys before dense salt cedar removal
 - Water rights framework for those sites requiring additional water rights

Status Cont'd

- Different Options for Implementation
 - Public private partnership (USFWS/NFWF)
 - Interagency agreements
 - USIBWC Environmental Services IDIQ Consultants
- Potentially **ALL** are viable options during the 10-year implementation phase

QUESTIONS?

Conceptual Restoration Plan:

www.ibwc.gov/Organization/Environmental/canalization_eis.html

Record of Decision:

www.ibwc.gov/Files/ROD_River_Mgnt_Alt_RGCP.pdf