



All-American Canal Lining Project

**Presentation To:
International Boundary and
Water Commission
(Citizens Task Force)**

By

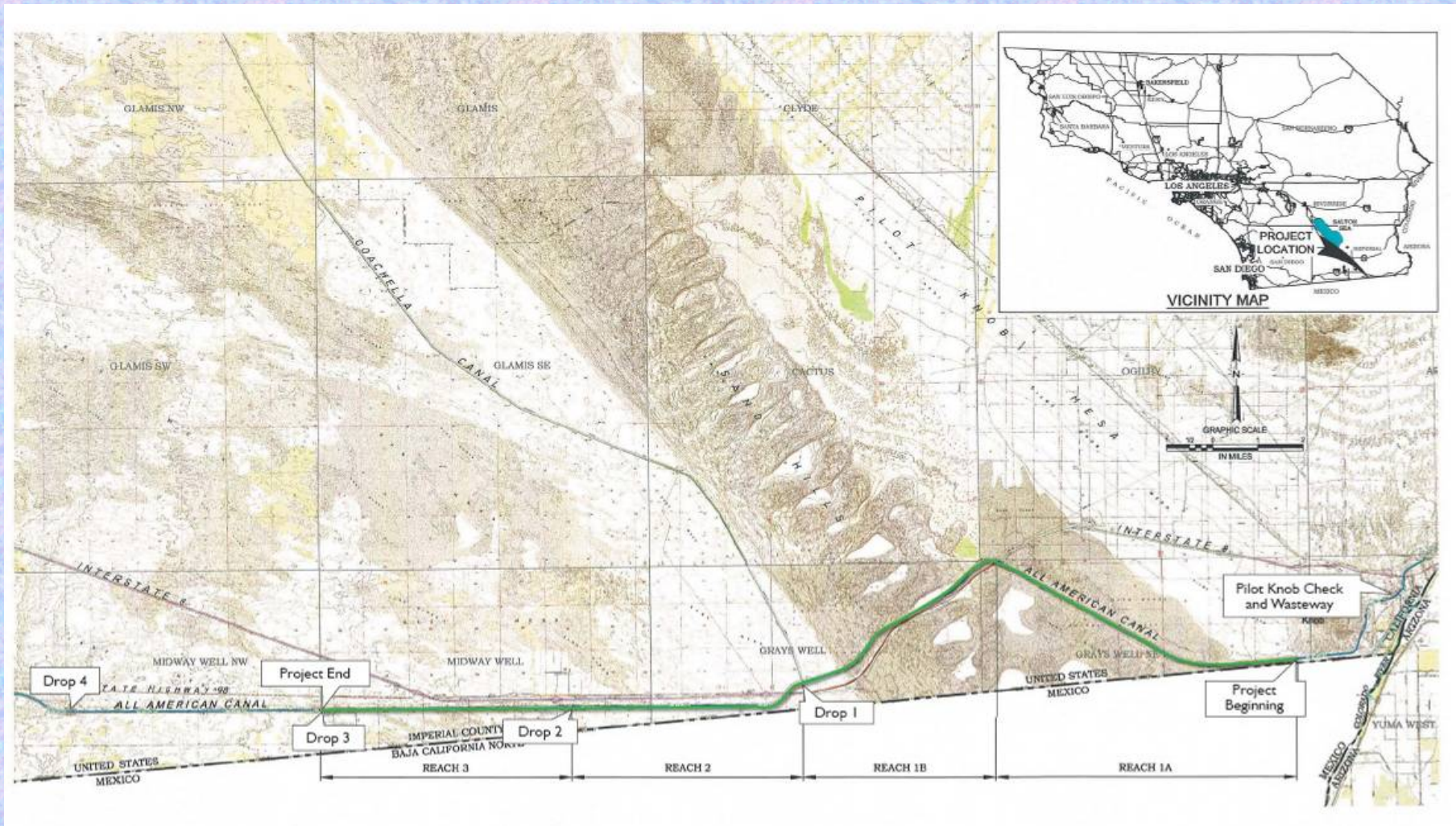
Mike King, IID Manager, Water Department

August 2007

Colorado River Basin



AACLP Project Location



AACLP – FACT SHEET

- Constructed in the 1930s by Reclamation
- New Canal will conserve (seepage control by lining 23 miles of canal) 67,700 acre feet per year. Enough water for 500,000 people.
- Approximate lined canal construction cost is \$250M.
- Project being directed by the All-American Canal Coordinating Committee (IID/San Diego County Water Authority/Reclamation)

History of the All-American Canal Lining Project

- Congressional authorization of the Project was under PL 100-675, Title II signed into law by the President on November 17, 1988
- Approved the Record of Decision (ROD) on July 29, 1994
- Reclamation issued a Supplemental Information Report dated Jan 12, 2006 which determined that a supplemental EIS/EIR was not required.
- Project funding has two sources. State of California and San Diego County Water Authority.
- Quantification Settlement Agreement (QSA) and its related documents signed on October 10, 2003 with the Project a key component to reduce California's water use to its 4.4 million acre-feet apportionment.
- Legal Challenges resolved, Project is under construction.

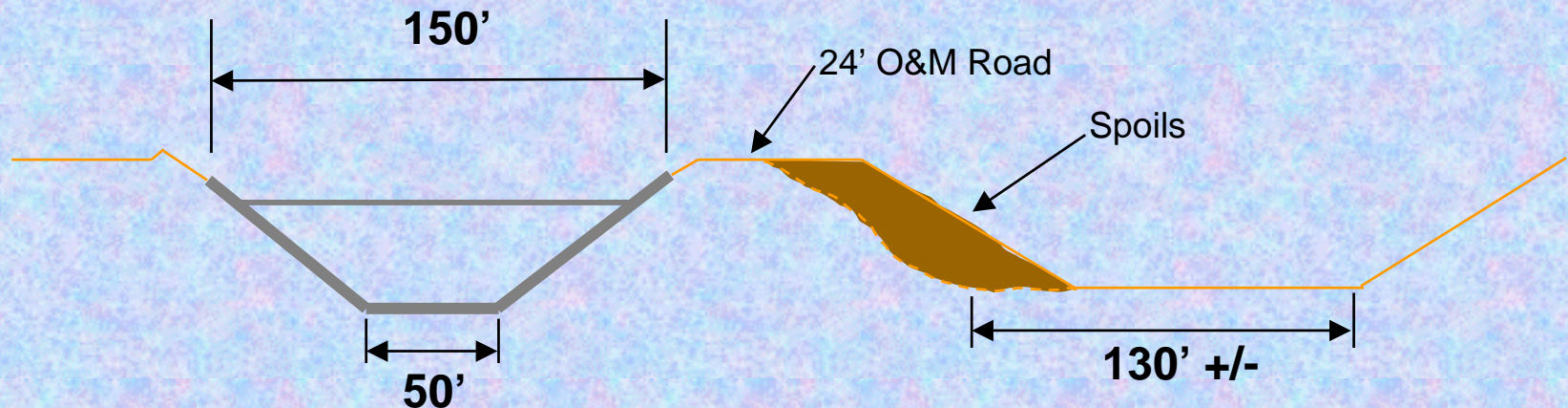
AACLP Project Elements

- Construct approximately 23 miles of lined canal adjacent to existing canal
- Design is complete and construction started June 2007
- Construction is expected to be completed in Spring 2010

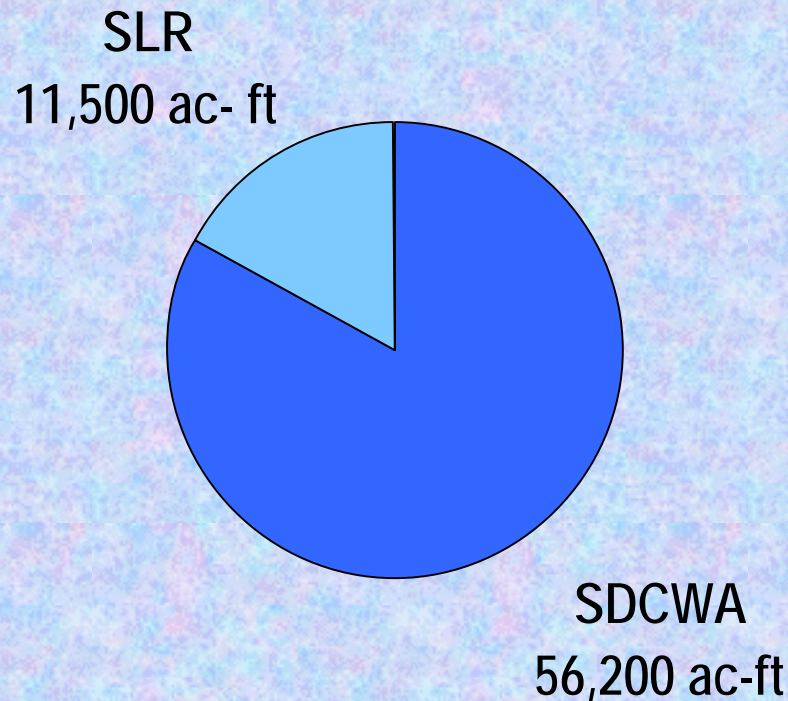
All-American Canal Typical Section

Proposed Lined Section
1.75H:1V side slope Reaches 1 & 2
2H:1V side slope Reach 3

Existing Unlined Section
2H:1V side slope



67,700 Acre-Feet per Year of Water Conserved from Lining the All-American Canal



AACLP Project Organization

All-American Canal Coordinating Committee (Voting Members)

• IID – Michael King • SDCWA – Kenneth Steele • Chairman – Van Tenney

**IID/DWR AACLP
Funding Agreement**

IID Executive Program Manager
Todd Shields

Participants (Non-Voting)

- *Reclamation – John English*
- *DWR – Chuck Keene*
- *San Luis Rey*
- *CVWD*
- *PVID*

Parsons Project Manager
Uli Kappus

Design
Bookman-Edmonston
Project Manager – Wayne Dahl

- *Montgomery Watson Harza*
- *Various Consultants*
- Canal Design - Dewatering
- Sedimentation - Soils
- Flow Measurement/
Operations
- Cost Estimating
- Construction Techniques

Design Coordination
Coordinator –
Walt Long

- *Geotechnics, Inc.*
- *Hale Engineering*

Construction Management
Construction Manager –
Don Crumbley

Environmental Activities
Environmental
Coordinator –
Michel Remington, IID

- **AFM Affiliates**
Cultural Resources
- **Dr. Paul Krausman**
Large Mammal Surveys
- **EcoSystems Restoration**
Associates
Wetlands Enhancement
- **RECON** • **Parsons**

AACLP OM&R Coordinating Committee

Voting Members

SDCWA

IID

SLR

Member Jointly Appointed

Non-Voting Member

USBR

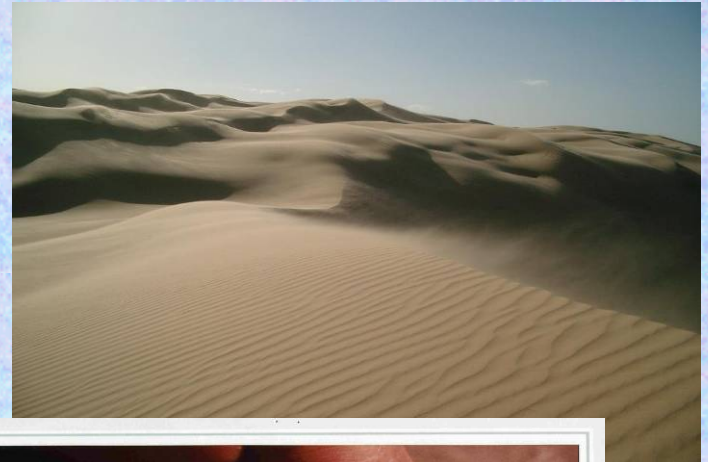
IID prepares O&M plan for All-American Canal

Project Challenges

- Project team is working diligently on a fast-track basis;
- Addressing design, construction, scheduling, and cost issues to minimize costs (construction, environmental, and operations/maintenance); and
- Optimizing the new canal facilities and the required environmental mitigation.

Environmental Program Objectives

- Compliance with Multiple Requirements
- Air Quality
- Cultural Resources
- Endangered Species
- Hazardous Materials/Solid Waste
- Recreation
- Transportation
- Vegetation
- Water Quality/Stormwater
- Wetlands
- Wildlife



Challenge of Public Access and Recreation During Construction

- Coordinating Construction and Public Use Near Work Areas
- Interagency Coordination During Peak Use Periods
- Public Information Distribution is Essential
- Interagency Recreation and Transportation Management Plan



Final Draft

Recreation and Transportation Management Plan
for the
All American Canal Lining Project



Prepared by
The All American Canal Lining Project Work Group
Project Planning Committee



August 8, 2007

DRAFT – CLIENT-PRIVILEGED DOCUMENT – NOT FOR DISTRIBUTION
H2_AAACP_Draft_RTMP_080607.doc
8/6/07

Safety Program



Construction Issues

- No Interruption of Water Flow
- Remote Location
- Migratory Bird Nesting Constraints



- Weather (120° F)
- Limited Resources

Current Status



- Design is complete and the project started construction in June 2007
- First major concrete pour completed on August 8, 2007
- Current schedule indicates construction completion in Spring 2010

Original Construction



Construction Photos



Construction Photos



Construction Photos



Construction Photos



Construction Photos



Construction Photos



Construction Photos



Reach 1A – 1B



Temporary Bridge at I-9 Pile Driving



Night Shift Excavating Reach 1A



Excavating Canal Facing West Reach 2



Cutting Down to Prism For Flume Slab

Thank You
Questions?